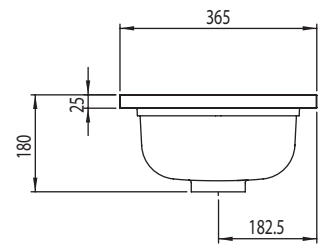
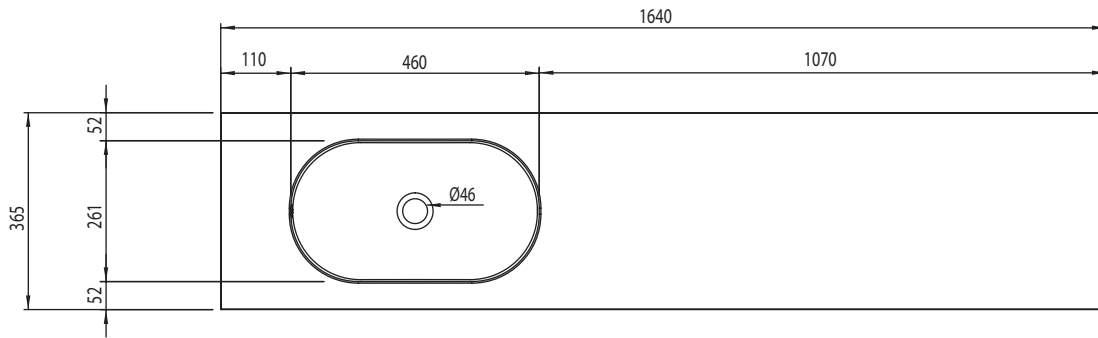


CITY Semi-Countertop Basin and Worktop

Whats in the box: 1x C3WTBAS

*Basin can be used Left or Right Handed

For Taphole *SEE INSTRUCTIONS*

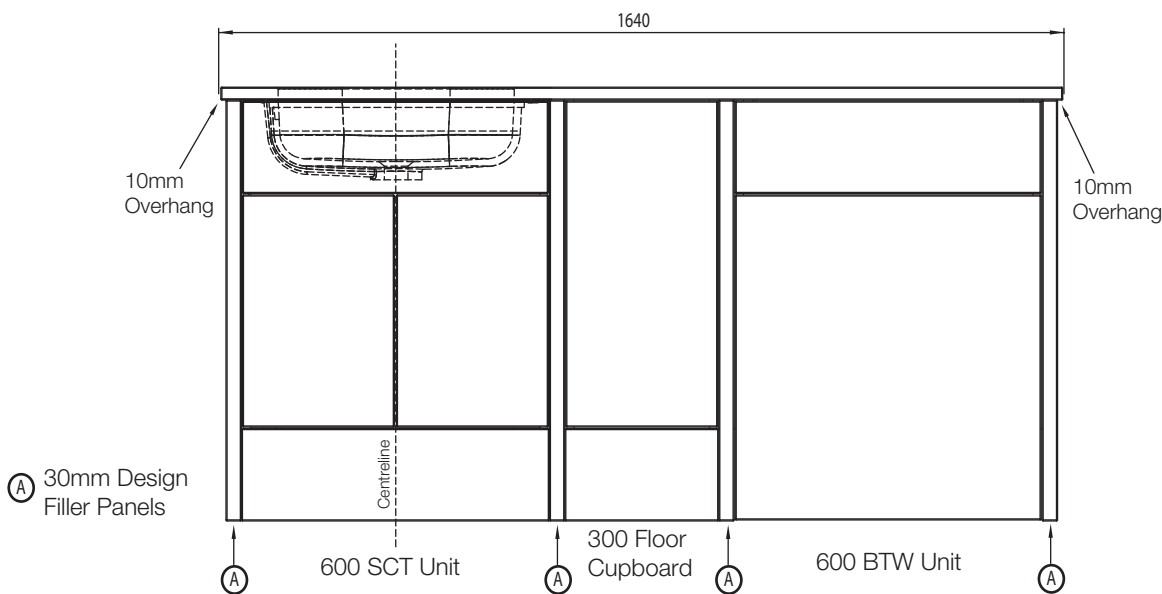


Diagrams not to scale
All dimensions in mm
tolerance of +/-5mm

Materials

Basin: Solid Surface

**Dimensions are subject to change, customers are advised to measure actual product before commencing installation.



Note:

- 1640mm City Basin product can be used straight out of box on a run that consists of the below without needing to be cut to length:
4 x 30mm Design Filler Panels
1 x 600 SCT Unit
1 x 300 Floor Cupboard Unit
1 x 600 BTW unit

- Using this configuration leaves 10mm basin overhang to prevent water damage to furniture.

Note:

- 1640mm City Basin can only be used with a Standard Depth 600mm Semi Counter Top Unit.

Note:

- Basin waste hole is to be positioned in the centre of the 600 SCT Unit.

Solid Surface Information

Has many names including:

- Corian
- LG Hi-macs

A homogenous compound mixture of polyester and aluminium trihydrate (derived from a natural Bauxite ore). Basically the same material all the way through so can be cut and sanded back to perfect finishes. Aluminium trihydrate is Moulded, vacuum treated and then finished by hand to create a perfectly smooth matt finish which is highly dimensionally accurate. Can be sanded and refinished should any stains occur due to misuse. Can be patch repaired by simple sanding back since material is homogenous (same all the way through).

Material Benefits:

- Point impacts (255g ball dropped from 610mm)
- Stain resistant
- Colourfast
- Temperature resistance

Technical Data Sheet

ROPER RHODES®

CITY Semi-Countertop Basin and Worktop

Whats in the box: 1x C3WTBAS

FAQs

- Q: What is the maximum water depth of the basin?**
A: 94mm up to the overflow.
- Q: Are there marks for taphole options.**
A: No, see instructions & template.
- Q: What configuration is the basin ready to be installed with?**
A: Out of the box, the basin is ready to be installed with a maximum run size of 1500mm including 4 x 30mm filler panels (1620mm total with 10mm overhang each side). Any runs smaller, the basin may need to be cut to length. If 30mm design filler panels are not used, both ends of worktop will need to be cut to correct length. See illustration on Page 1.
- Q: Where do I position the basin on the carcass?**
A: It is very important that the centre waste hole basin is in-line within the centre of the 600mm SCT unit. See illustration on Page 1
- Q: Can I use a 500mm SCT unit with this basin?**
A: No, this is only suitable with a STD 600mm SCT Unit.
- Q: What size waste do I need?**
A: A minimum 75mm length waste is recommended.
- Q: What tools do I need to cut the worktop?**
A: A 35mm holesaw is required to cut the tap hole . A quality circular saw/jigsaw/router is required for cutting and finishing the worktop. We recommend fine toothed wood blades. Additional sanding may be required. Please refer to product instructions for further details.
- Q: Is a basin overhang required?**
A: It is recommended to have a basin overhang to prevent water damage to furniture. If using the 1500mm with 4 design filler panel configuration without cutting worktop, there is a 10mm basin overhang on both left and right hand of basin. See illustration on Page 1

Note: Care should be taken when calculating configurations without filler panels.