

Floor Mounted Unit PL5010.x, PL6010.x, INST04102x

Please retain for future reference

Installation and Fitting Instructions

Before you start

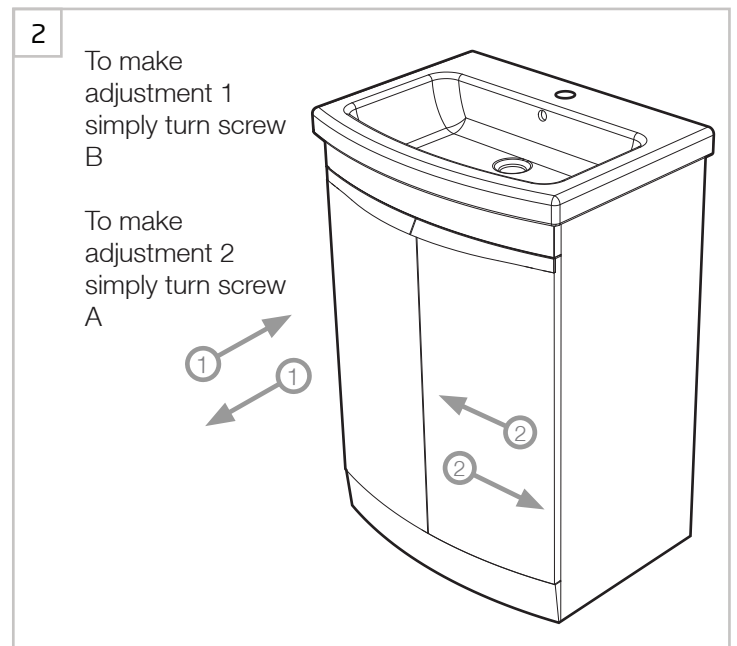
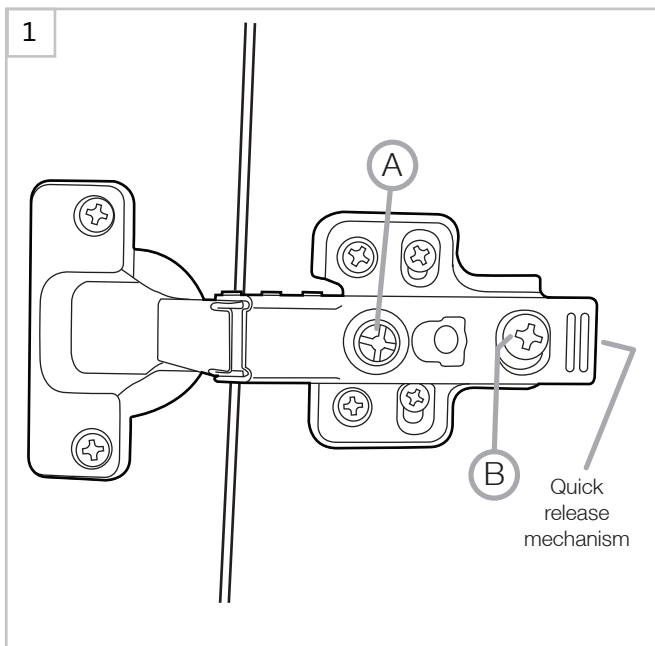
It is recommended that the unit and basin are secured to a suitably reinforced wall to ensure stability. Place the furniture unit in the desired position. Secure unit to the wall through the pre-drilled holes in the rear brace using fixings suitable for the wall surface (not supplied). If in any doubt please consult an expert.

Wear suitable eye protection when drilling. Take care when using power tools near water - the use of a residual current device (RCD) is recommended. Beware of hidden pipes or cables. Take care when drilling tiled surfaces as the drill might slip. Use a piece of masking tape to prevent the drill from wandering.

Fitting Basin

Once the basin is plumbed in finish by securing to the washstand with a silicone sealant (not supplied).

Hinge Adjustment



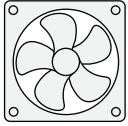
Furniture Aftercare Instructions

As with all wooden furniture, this unit should be treated with care:

We recommend...



Wipe away any water splashes or condensation after use. Excessive exposure to water will deteriorate the furniture.



All bathrooms should be well ventilated with a suitable extractor fan.



Clean with a soft damp cloth only.



Use a wax free polish if one must be used.

For removal of lime scale deposits use a suitable proprietary cleaner. If necessary test on an inconspicuous area first.

Please DO NOT...



Do not scrub or scour



Do not use abrasive cleaning agents

Replacement components

Should you require any replacement components for this product please contact customer services using the contact details below.