

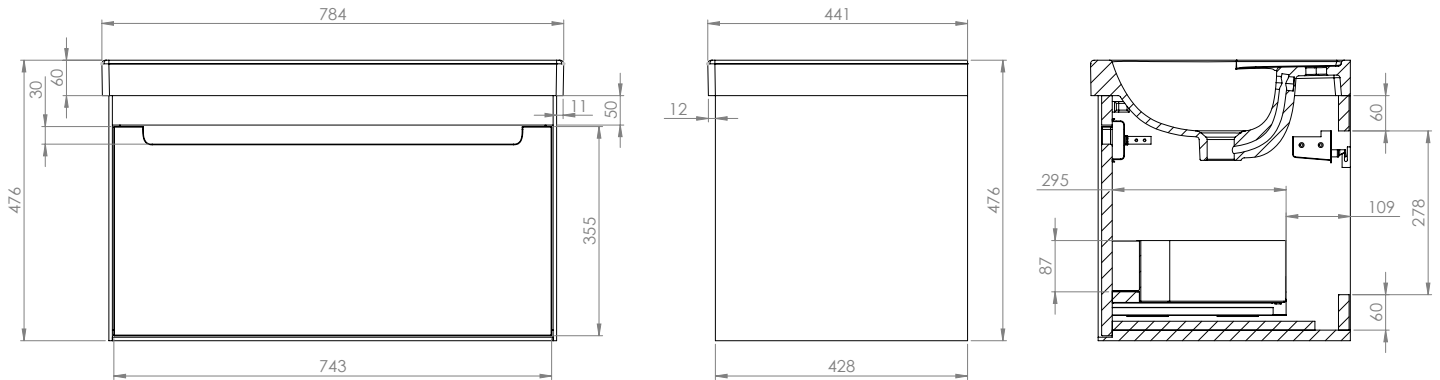
Technical Data Sheet

Acumen 800 WM unit

What's in the box: 1x ACU800W.X + fixings

TAVISTOCK
inspiring bathrooms

Refer to basin TDS for more information.



Diagrams not to scale
All dimensions in mm
Tolerance of +/-5mm

Materials

Carcass: 18mm painted MDF
Fascia components: 18mm painted MDF

**Dimensions are subject to change, customers are advised to measure actual product before commencing installation.

***Fixing point dimensions are for guidance only/the positions of wall fixing must be checked when product is received.

FAQs

- | | |
|--|--|
| Q: How big is the plumbing void? | A: 50mm |
| Q: Are the runners soft close? | A: The runners are both soft close and quick release. |
| Q: How deep is the unit when the drawers are fully open? | A: Approximately 775mm. |
| Q: Can the drawers be adjusted? | A: The drawers can be adjusted as detailed in the supplied instructions. |
| Q: What is the interior finish of the unit? | A: The unit interior is dark grey. |
| Q: Do need to install the aluminium profile trim? | A: Yes, this is available to purchase and install separately. |

NOTE: Colours unique to Tavistock - No RAL Code available