

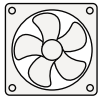
FURNITURE AFTERCARE INSTRUCTIONS

As with all wooden furniture, this product should be treated with care.

We recommend...



Wipe away any water splashes or condensation after use. Excessive exposure to water will deteriorate the furniture.



All bathrooms should be well ventilated with a suitable extractor fan.



Clean with a soft damp cloth only.



For removal of lime scale deposits use a suitable proprietary cleaner. If necessary test on an inconspicuous area first.

Please DO NOT...



Do not scrub or scour



Do not use abrasive cleaning agents

Replacement Components

Should you require any replacement components for this product please contact Roper Rhodes using the contact details below.

SAFETY NOTICE

The unit and basin should be fully secured to a suitably reinforced wall to ensure stability. The wall plugs supplied are only suitable for solid stone/brick walls. For plasterboard walls use specialist wall plugs along with supplementary wall strengthening as units can be very heavy. Seek advice from a specialist about the suitability of fixings to be used.

Wear suitable eye protection when drilling. Take care when using power tools near water - the use of a residual current device (RCD) is recommended. Beware of hidden pipes or cables. Take care when drilling tiled surfaces as the drill might slip. Use a piece of masking tape to prevent the drill from wandering.

BASIN INSTALLATION (Once all plumbing is complete)

- Apply a bead of silicone to the basin on 2 sides to fix to and protect the side panels as per figure 1.
- Typically the basin also has a silicone bead along the back edges where it meets the wall (not shown)
- The basin should be held in place while the silicone cures.

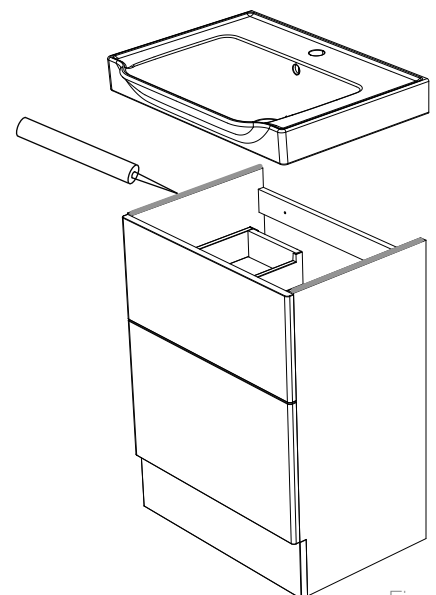


Figure 1

REMOVING DRAWER/ RE-ATTACHING DRAWER

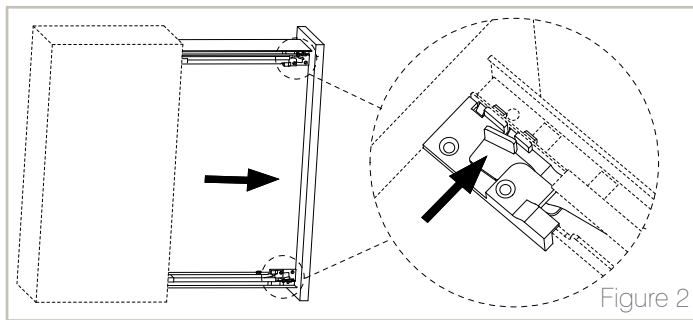


Figure 2

To remove the drawer - press and hold in the levers on both sides of the drawer and slide the drawer from the runners.

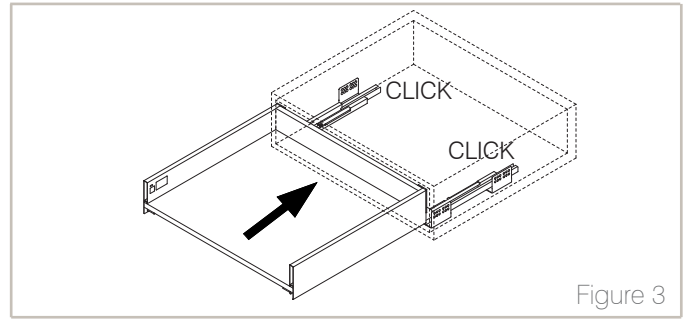


Figure 3

When replacing the drawer - ensure that the runners fully engage at the back of the drawer and an audible click is heard

DRAWER ADJUSTMENT/ DRAWER FASCIA REMOVAL

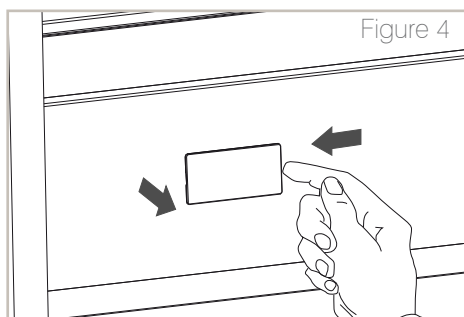


Figure 4

Remove the cover caps from the insides of the drawer on both sides to show the adjustment panels

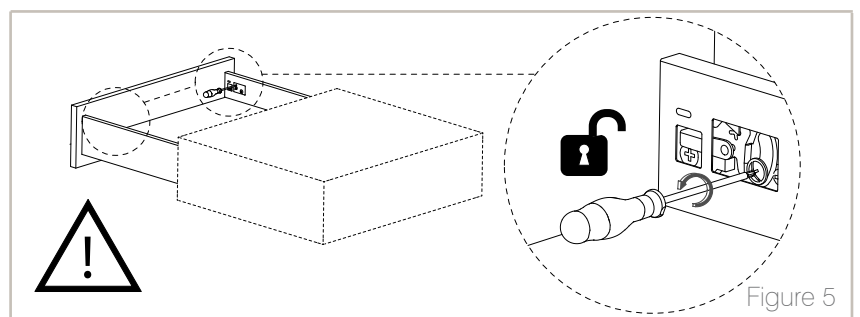


Figure 5

BEFORE ANY ADJUSTMENTS, LOCKING SCREWS ON BOTH RUNNERS SHOULD BE UNSCREWED. FAILURE TO DO SO COULD DAMAGE THE RUNNERS

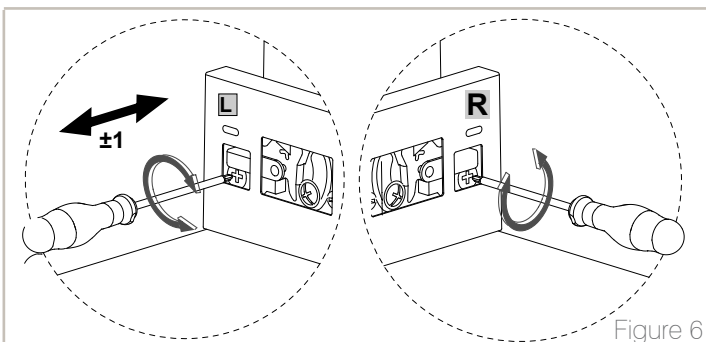


Figure 6

Horizontal adjustment. Turn the screws shown until they become stiff - turning past this point will move the drawer fascia left / right

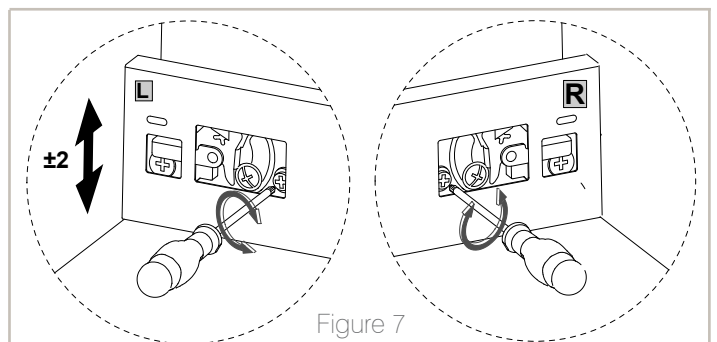


Figure 7

Vertical adjustment. Turn the screws shown to raise / lower the drawer front. This can be done on the left and right hand runners.

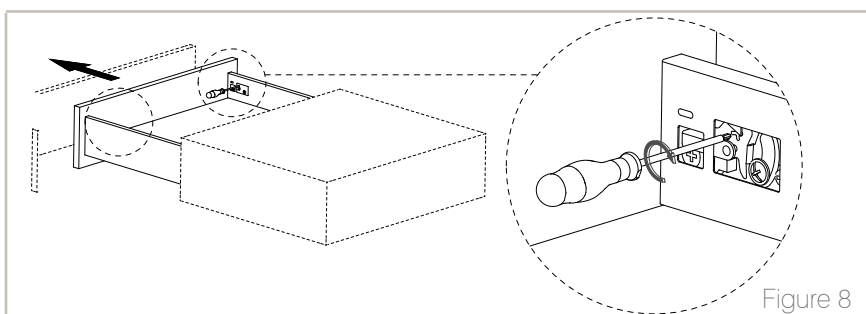


Figure 8

Fascia removal.

- Insert screwdriver into release mechanism (moving the shield out of the way) and twist the mechanism on both sides to release the drawer front.
- To reattach - simply push drawer fascia back into place (it will click and lock in place).

ONCE ALL ADJUSTMENTS MADE - RE-TIGHTEN LOCKING SCREWS AND REPLACE COVER CAPS

FURTHER DRAWER ADJUSTMENT - SUPPORT RAILS (For bottom drawers only)

Adjusting Tilt of Fascia.

- Slide shroud back
- Remove front of rail from catch on back face of fascia
- Turn screw in end of rail to desired position:

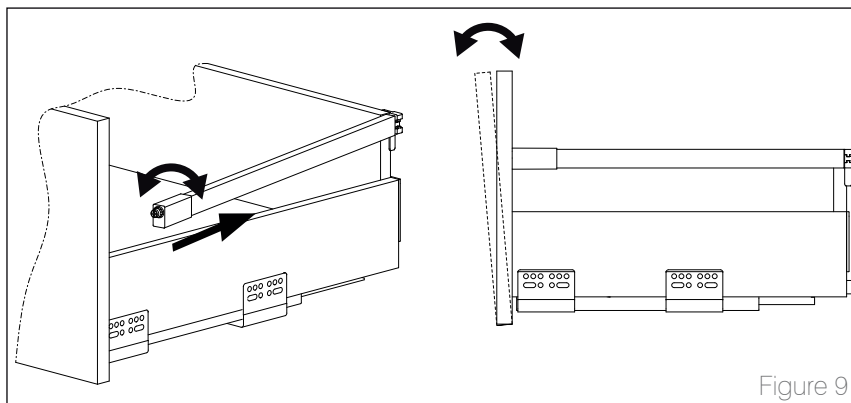
Clockwise to tilt forward



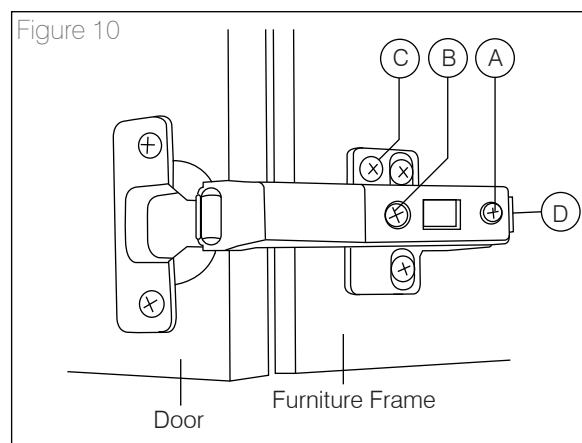
Anti clockwise to pull back



- Relocate rail on catch
- Put shroud back in place



DOOR HINGE ADJUSTMENT (1000mm UNITS ONLY)



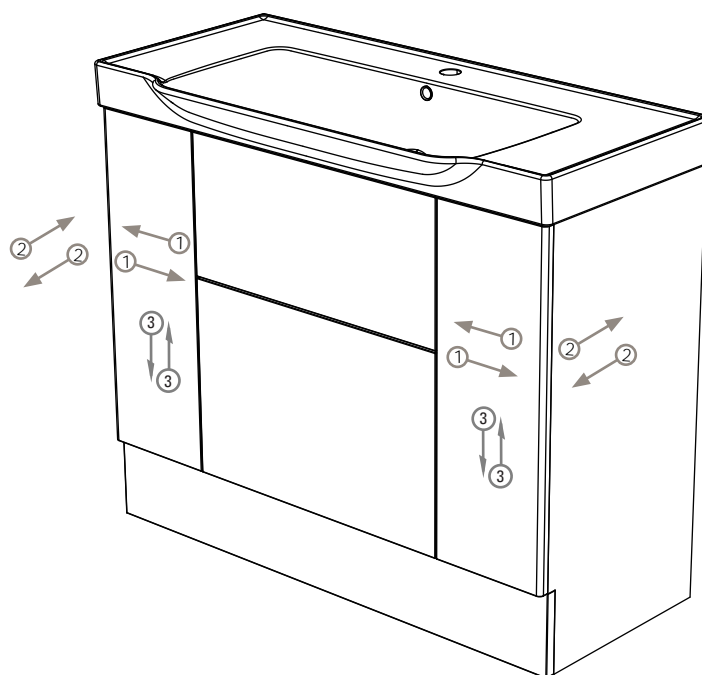
Hinges may require adjustment for correct door alignment. This is achieved with the adjustable soft close hinges using the adjustment screws A, B and C (see Figure 10).

The hinges also feature a quick release mechanism to quickly and easily detach the door from the furniture frame, this is activated by pressing button D (see Figure 10).

To make adjustment 1 (see Figure 10) tighten/loosen adjustment screw A.

To make adjustment 2 (see Figure 10) simply turn screw B

To make adjustment 3 (see Figure 10) simply turn screw C

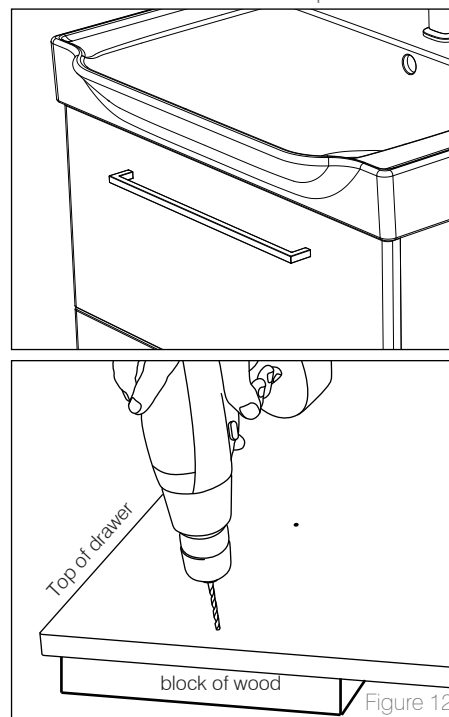


INSTALLING HANDLES

For all pull handles

- Remove the drawer/ door as per instructions in pages 2 & 3.
- Included in the box is a template for fixing the handles at our recommended heights.
- Tape this in place in the centre of the front of the drawer front and mark the locations of the relevant handle holes.
- Clamp a piece of wood on the back of the drawer (being careful not to damage the front) and drill through carefully from the front. See figure 12.
- Screw handles into place.
- Re-install drawers ensuring the drawer box clicks back into place.

Pull Handles Example



For all top mounted handles

- Hold handle securely in centre of door/ drawer.
- Make small 1mm pilot holes at approximately 2mm depth.
- Using screws provided with handles, fix in place.

Top Mounted Handles Example

