

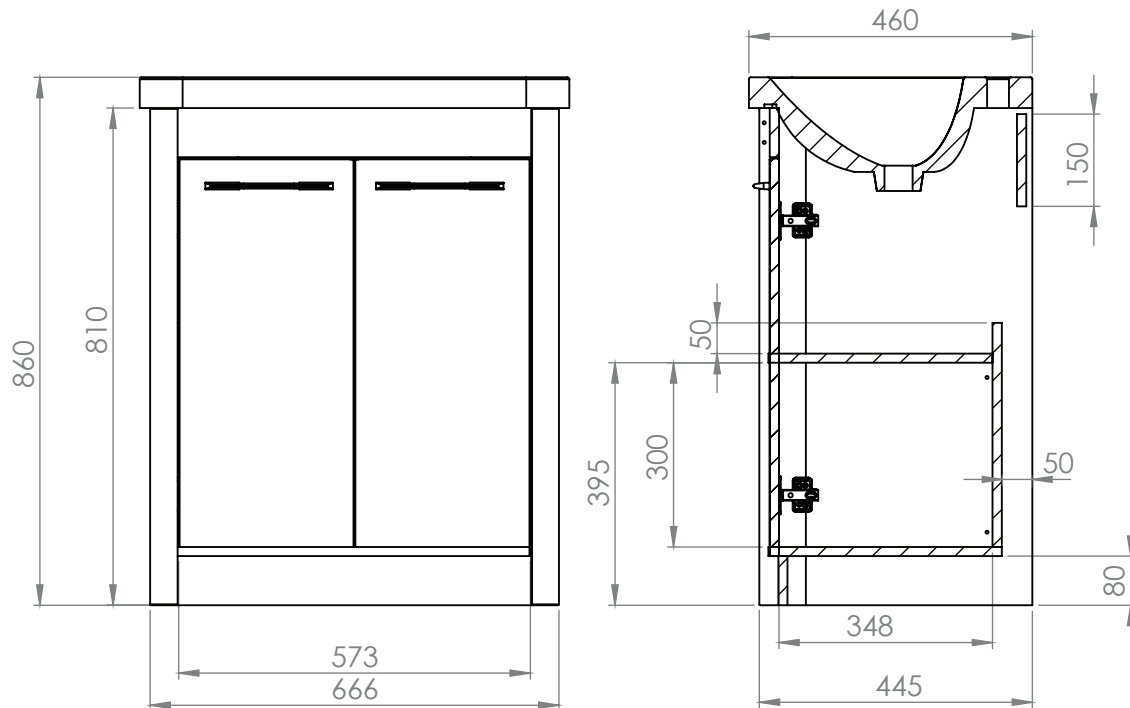
Technical Data Sheet

CONTOUR 700mm Floor Mounted Unit

What's in the box: 1x CN7010.X



*Reference basin TDS for further info



Diagrams not to scale
All dimensions in mm
Tolerance of +/-5mm

Materials

Carcass: 16mm Painted & Melamine Faced MDF

Fascia Components: 16mm Painted MDF

**Dimensions are subject to change, customers are advised to measure actual product before commencing installation.

***Fixing point dimensions are for guidance only/the positions of wall fixing must be checked when product is received.

FAQs

Q: How big is the plumbing void?

A: 50mm.

Q: Are the handles fitted?

A: No, handles need fixing. Holes are pre-drilled.

Q: How far apart are the hole centres for the handles?

A: 160mm.

Q: Are the hinges soft close?

A: The hinges are both soft close and quick release.

Q: Can the doors be adjusted?

A: The doors can be adjusted as detailed in the supplied instructions

Q: How deep is the unit with doors open?

A: Approx 730mm at 90°.

Q: Is the shelf removable?

A: No, the shelf can't be removed.

Q: What is the shelf capacity?

A: Shelf max depth: 348mm.

Q: How many shelves are there?

A: There is one shelf and a base within the unit.

Q: Is the shelf adjustable?

A: No, the shelf is at a fixed position.

Q: What is the interior finish of the unit?

A: The unit interior is the same finish as the exterior.

NOTE: Colours unique to R2 - No RAL Code available