

## Before You Start

---

- The product should only be installed by a suitably qualified / competent / experienced bathroom installer.
- Check the contents of the pack for defects before installation. The supplier will not accept any refitting costs if faulty product has been fitted.
- The furniture should only be installed in a well ventilated bathroom at a distance from bath / showers to avoid splashing. It should also be protected from any shower / handset spray by a shower screen or similar.
- Make sure the unit and basin are secured to a suitably strong / reinforced wall to ensure stability.

## CAUTION

---

- Take care when using power tools near water - the use of a residual current device (RCD) is recommended.
- Beware of hidden pipes or cables.
- Wear suitable eye protection when drilling.
- Take care when drilling tiled surfaces as the drill might slip. We recommend using a piece of masking tape to prevent the drill from wandering.

## Aftercare

---

### Do ✓

- Wipe away any water splashes or condensation after use. Excessive exposure to water or sitting water will damage the furniture.
- Clean with a soft damp cloth with a mild detergent only. Surface should then be fully dried using a soft lint free cloth.
- A suitable limescale remover can be used on the BASIN ONLY if required but MUST be tested on an inconspicuous area of the basin.

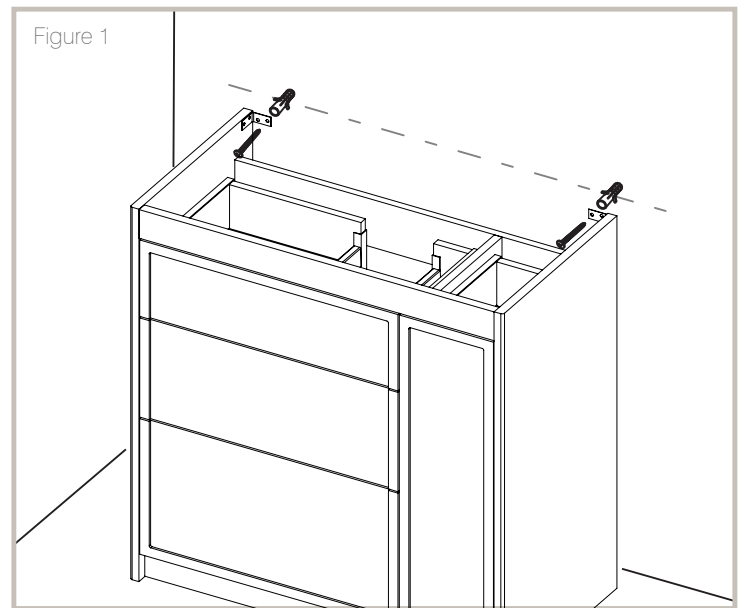
### Don't ✗

- Scrub or scour any part of the furniture or basin.
- Use furniture polish.
- Use abrasive or bleaching cleaning agents.
- Allow hot or sharp objects to contact the furniture or basin.

## ANTI-TIP FIXING

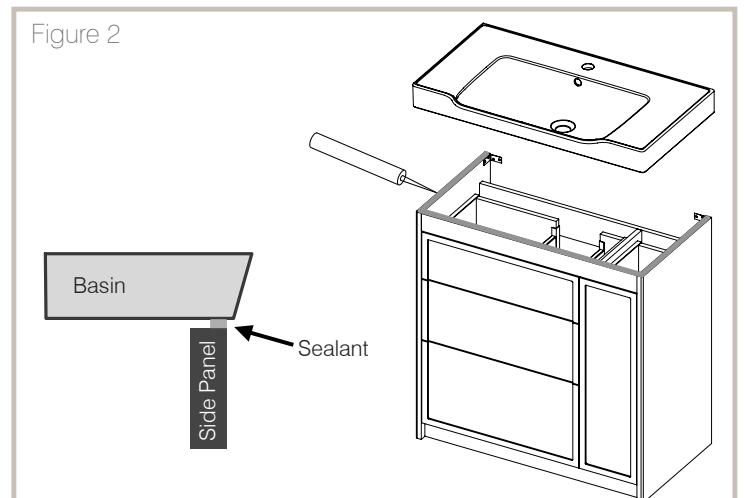
### IMPORTANT – ANTI-TIP FIXING MUST BE INSTALLED

Measure the height of the fixing bracket holes and use a pencil to mark on wall locations. Remove furniture unit once drilled on marked location and fit wall plugs. Put furniture back in place and screw to the wall via these fixing points. (Figure 1)



## BASIN INSTALLATION (Once all plumbing is complete)

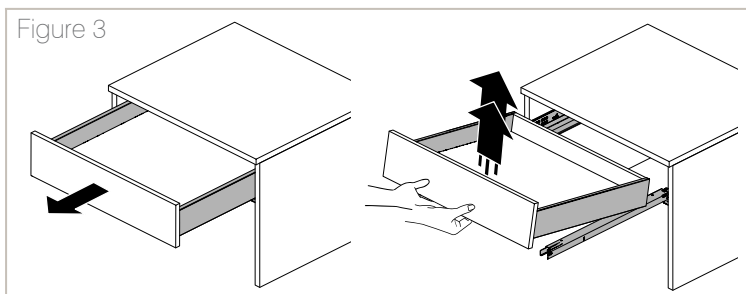
- Apply a bead of silicone to the basin on 3 top edges to fix to and protect the side panels and drawer fascias as per figure 2.
- Typically the basin also has a silicone bead along the back edges where it meets the wall (not shown)
- The basin should be held in place while the silicone cures.



## ! SAFETY NOTICE !

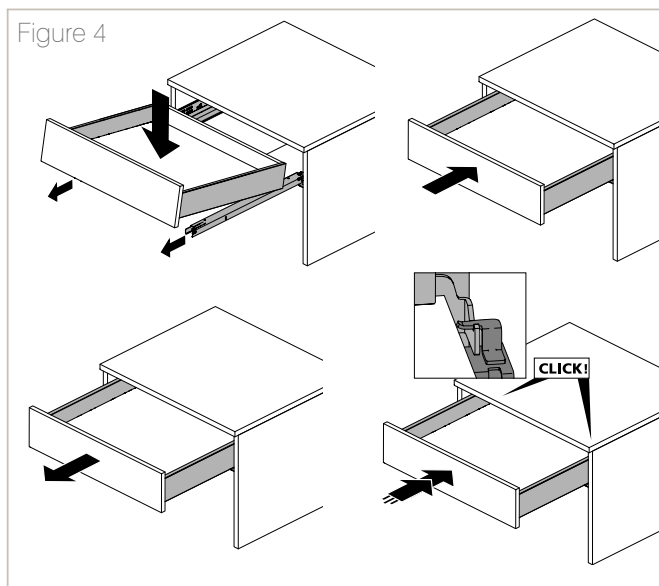
Slim tall drawers have a weight load capacity of 3kg per drawer box. All other drawers are limited to 8kg each.

## REMOVING DRAWER/ REATTACHING DRAWER

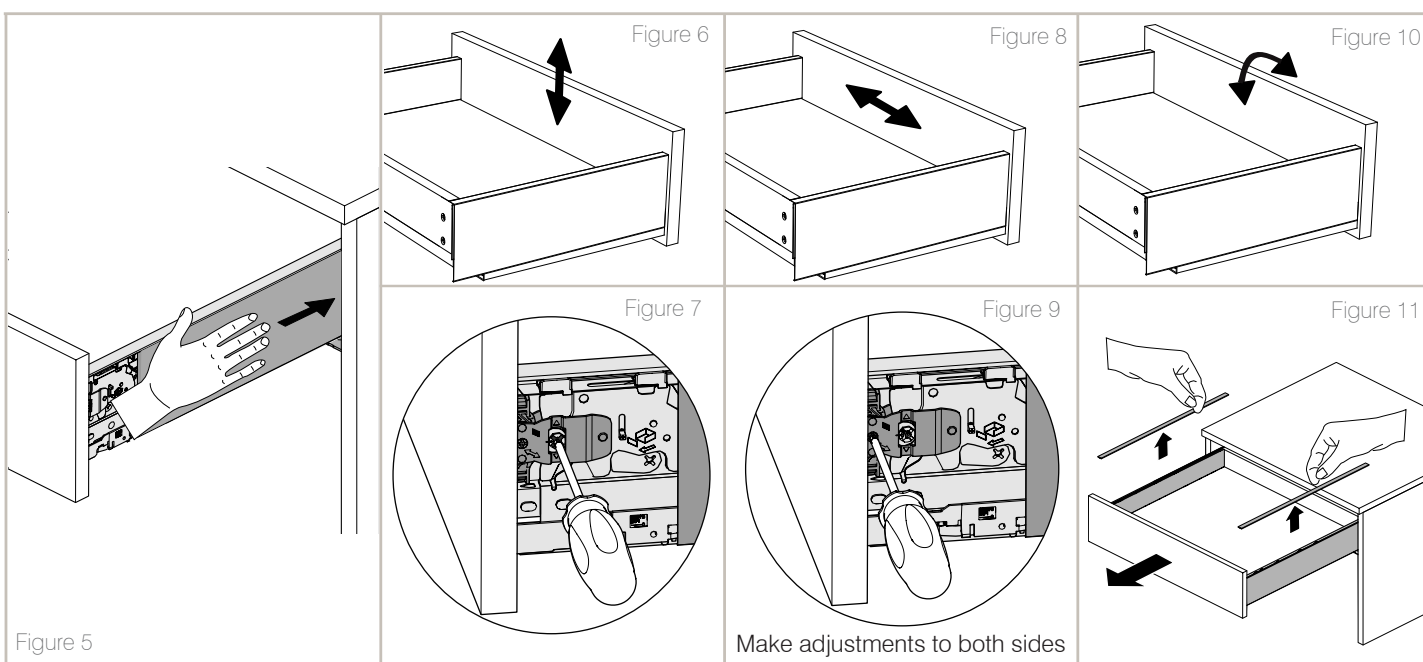


To remove the drawer - pull drawer out and pull up vertically in one sudden and firm motion. Drawer assembly will release from runners from the front. Refer to figure 3

When replacing the drawer - ensure runner extensions are fully and evenly pulled out. The runner is fully engaged at the back of the drawer when an audible click is heard. Refer to figure 4

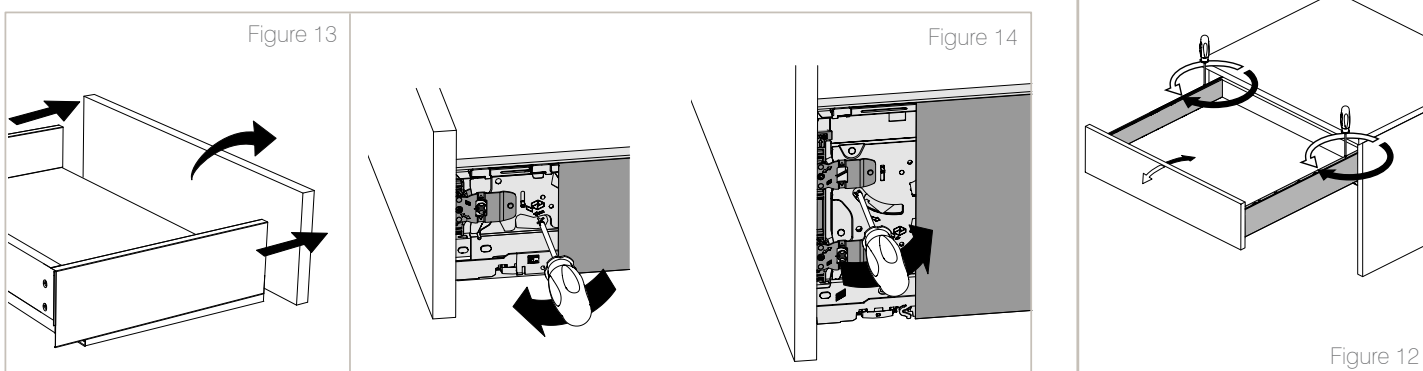


## DRAWER ADJUSTMENT



Make adjustments to both sides

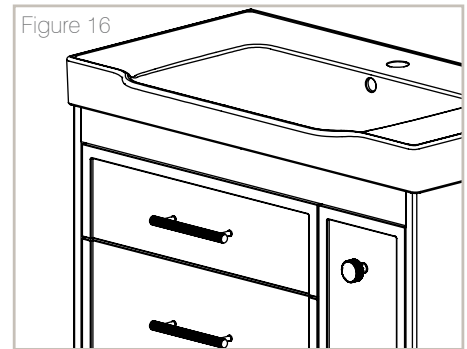
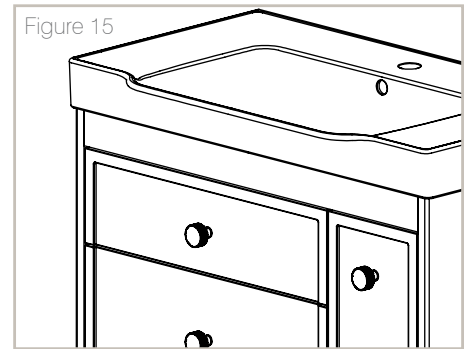
## DRAWER FASCIA REMOVAL



## INSTALLING HANDLES

- Remove the drawer fascia following the instructions on page 3 – figures 13 and 14
- Choose location for your chosen handles. Our suggested heights are as per diagram below (see Diagram of proposed handle height)
- Use low tack masking on the front of the drawer and mark your handles horizontally centred on the drawer fronts

Pull Handles Example



- Clamp a piece of wood on the back of the drawer (being careful not to damage the front) and drill through carefully from the front (figure 17).
- Screw handles into place.
- Re-install drawers ensuring the drawer fronts and drawer box click back into place.

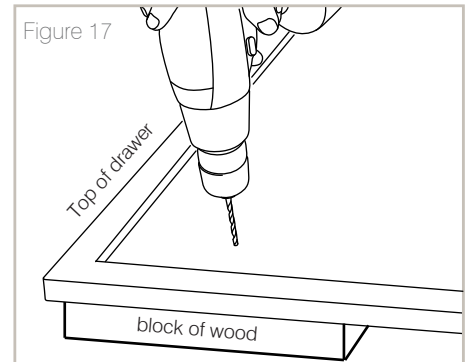


Diagram of proposed handle height

