

Technical Data Sheet

Shower Systems

No.	Description	Code	Fixings Included
1	2F Traditional Exposed Shower System	TR3016, TR3015, TR3014	YES

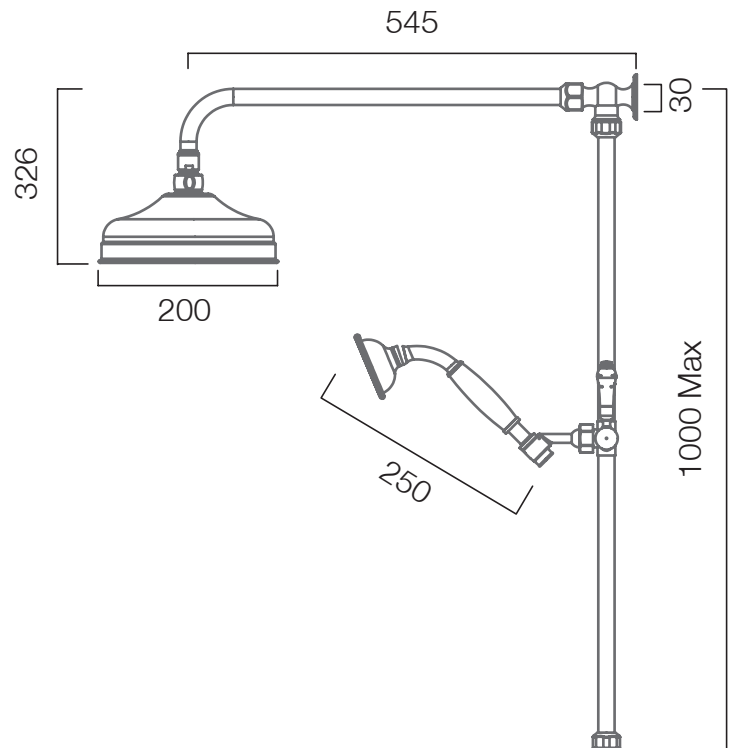
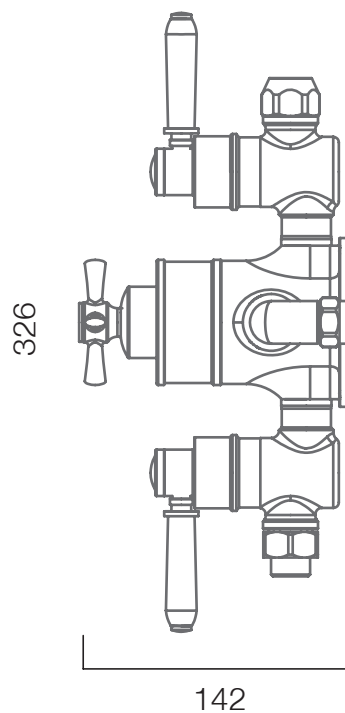
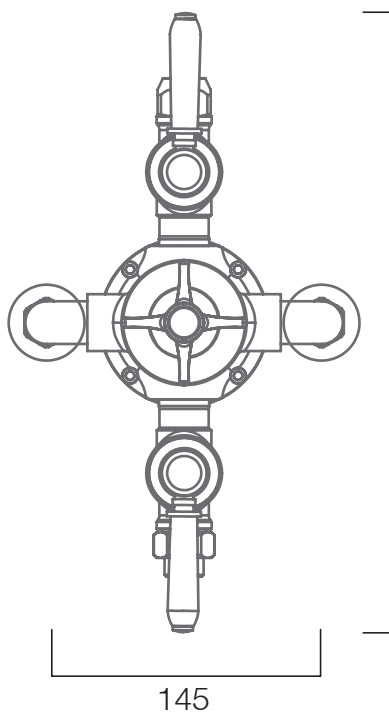


Inlet Pressure	Flow Rate (l/min)
0.5 bar	9.6
1 bar	14.7
2 bar	21.9
3 bar	26.1
4 bar	30.8

The traditional exposed shower kit is used by both Regatta and Farview exposed shower systems

Dimensions - Overview

Diagrams not to scale. All dimensions in mm (tolerance of +/-5mm)



FAQs

How tall is the riser rail? 1000mm - this can be cut down if necessary

How long is the shower hose? 1.5m

What is the minimum pressure for the valve? 1.0bar

What is the valve connection size? 1/2" suitable for 15mm pipework

Technical Data Sheet

Shower Systems

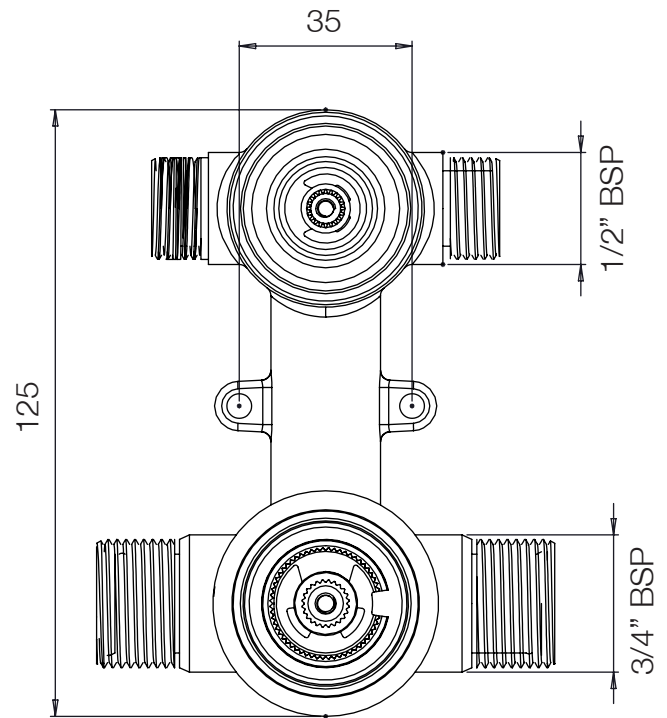
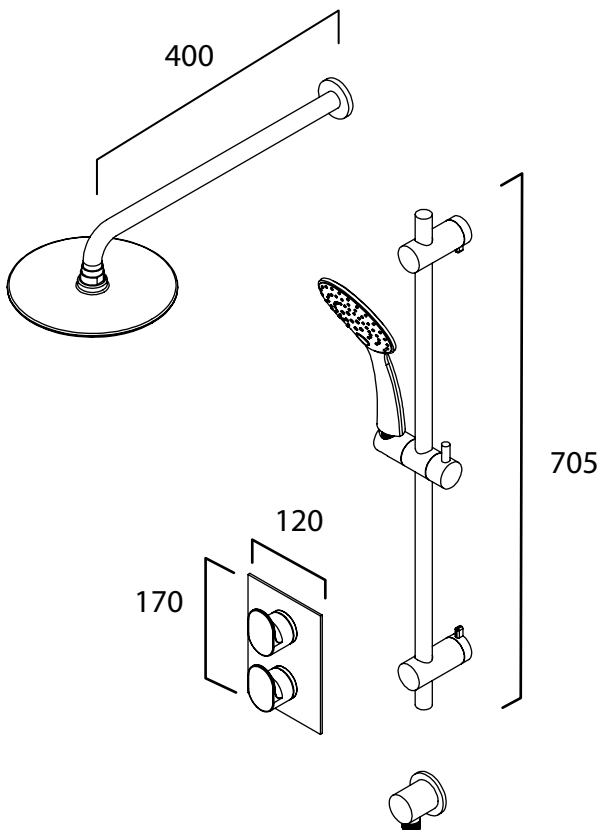
No.	Description	Codes	Fixings Included
1	Round Shower System	TR3008, TR3011, TR3006, TR3009	YES



Inlet Pressure	Flow Rate (l/min)
0.5bar	8
1bar	9
2bar	13.5
3bar	17.5

The round shower kit is used for Prefix, Joy, Fuse and Crew shower systems

Dimensions - Overview



NOTE: VALVE TO BE RECESSED 80-100mm FROM FINISHED WALL SURFACE

FAQs

How tall is the riser rail? 705mm - the fixing brackets are adjustable and have no fixed distance.

How long is the shower hose? 1.5m

What is the minimum pressure for the valve? 1.0bar

What is the valve connection size? 1/2" BSP for outlets / 3/4" BSP for inlets

Technical Data Sheet

Shower Systems

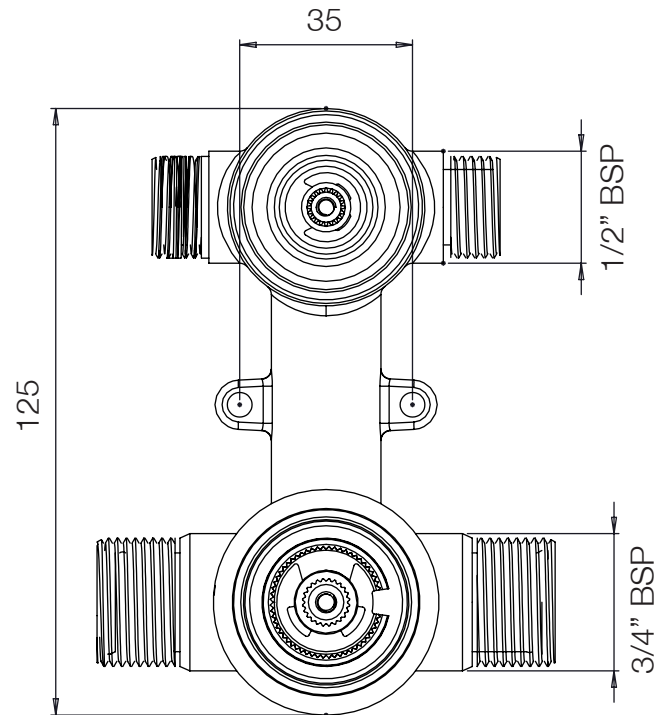
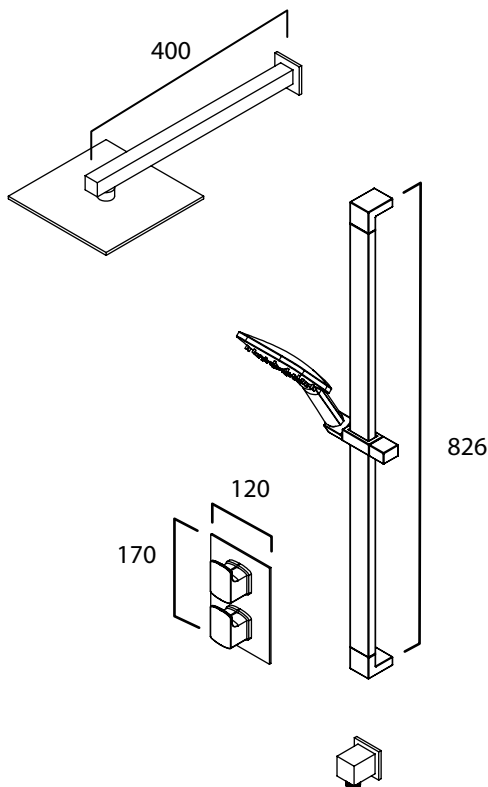
No.	Description	Codes	Fixings Included
1	Square Shower System	TR3007, TR3010	YES



Inlet Pressure	Flow Rate (l/min)
0.5bar	8
1bar	9
2bar	13.5
3bar	17.5

The square shower kit is used for Ergo and Spirit shower systems

Dimensions - Overview



NOTE: VALVE TO BE RECESSED 80-100mm FROM FINISHED WALL SURFACE

FAQs

How tall is the riser rail? 826mm

How long is the shower hose? 1.5m

What is the minimum pressure for the valve? 1.0bar

What is the valve connection size? 1/2" BSP for outlets / 3/4" BSP for inlets

Technical Data Sheet

Shower Systems

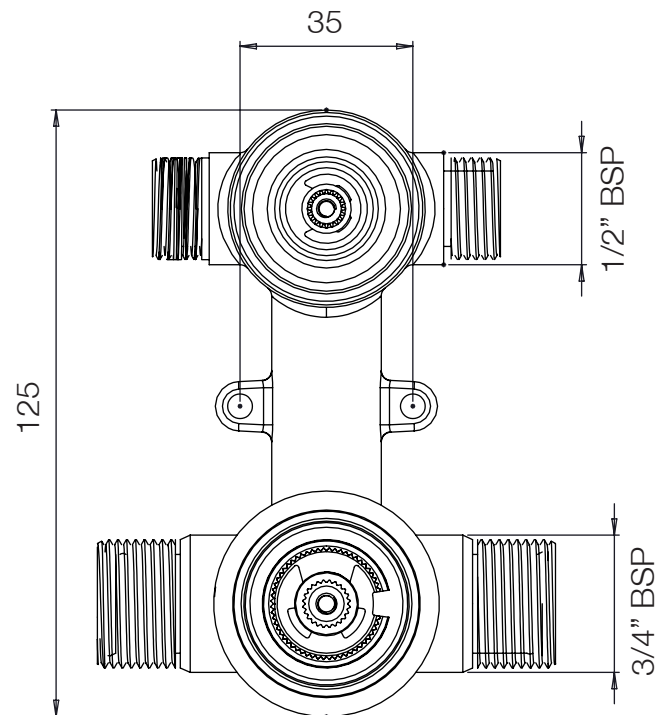
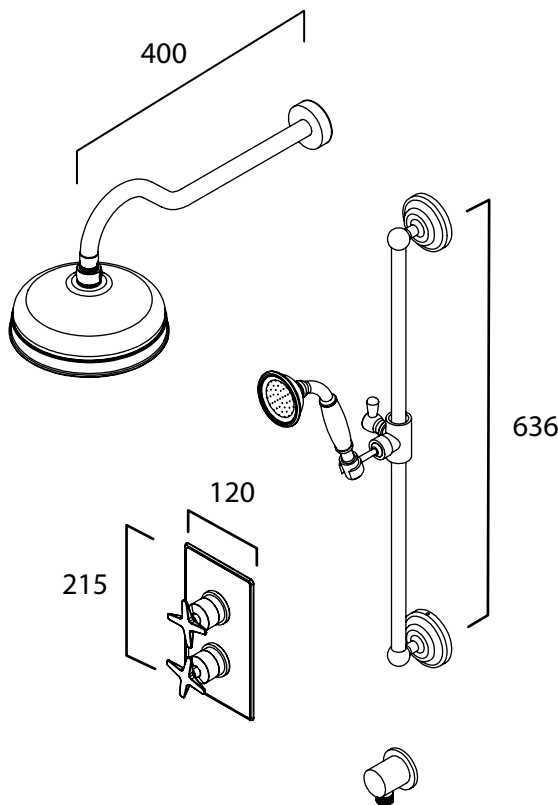
No.	Description	Codes	Fixings Included
1	Traditional Shower System	TR3013, TR3012, TR3017	YES



Inlet Pressure	Flow Rate (l/min)
0.5bar	8
1bar	9
2bar	13.5
3bar	17.5

The traditional shower kit is used for Regatta and Fairview shower systems

Dimensions - Overview



NOTE: VALVE TO BE RECESSED 80-100mm FROM FINISHED WALL SURFACE

FAQs

How tall is the riser rail? 636mm - the riser rail can be cut shorter if necessary

How long is the shower hose? 1.5m

What is the minimum pressure for the valve? 1.0bar

What is the valve connection size? 1/2" BSP for outlets / 3/4" BSP for inlets