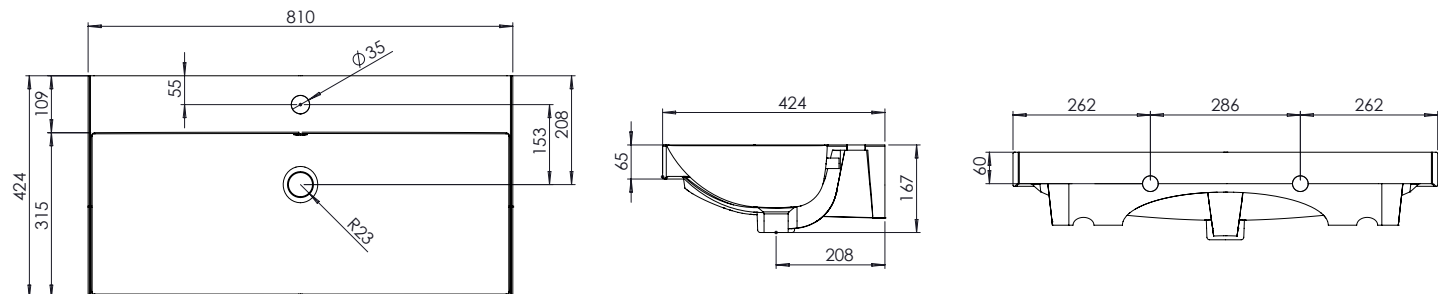


Technical Data Sheet

PLATFORM 800mm Ceramic Basin

What's in the box: 1x DC12014



Diagrams not to scale
All dimensions in mm
Tolerance of +/-5mm

Materials

Basin: Ceramic

*Dimensions are subject to change, customers are advised to measure actual product before commencing installation.

**Fixing point dimensions are for guidance only/the positions of wall fixing must be checked when product is received.

FAQs

- | | |
|---|---|
| Q: What is the maximum water depth of the basin? | A: 83mm up to the overflow. |
| Q: What is the internal depth? | A: The internal depth is 118mm. |
| Q: What is the depth of the tapledge? | A: The Tapledge is 109mm deep. |
| Q: What is the distance from the Taphole centre to Basin Waste? | A: 153mm |
| Q: Can the basin be wall mounted? | A: Yes. Platform is best paired with our Adjustable Bottle Trap (TRAP6). |
| Q: Are fixings supplied? | A: No. We recommend using fixings suitable for the wall type that the basin will be mounted to. |
| Q: What are the positions of the mounting points? | A: The centres of the mounting slots in the basin are 286mm apart. |
| Q: Does the product conform to British Standards? | A: Yes. The product conforms to BS EN 31. |
| Q: Does the basin fit other furniture? | A: No. |