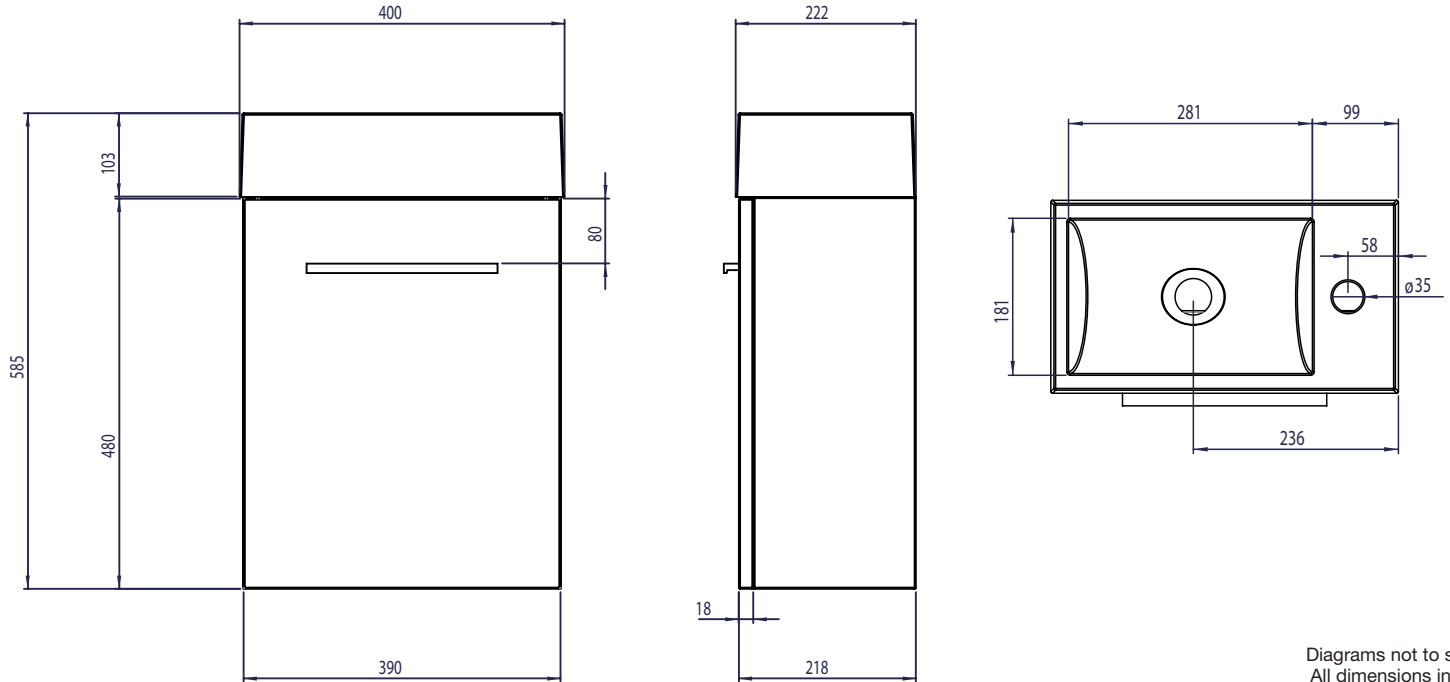


Technical Data Sheet

DRIVE Wall Mounted Unit Including Basin

What's in the box: 1x DR4011.X + Handle/ Fixings



Diagrams not to scale
All dimensions in mm
Tolerance of +/-5mm

Materials

Carcass: 18mm Painted MDF

Fascia Components: 18mm Painted MDF

Basin: Isocast

*Dimensions are subject to change, customers are advised to measure actual product before commencing installation.

**Fixing point dimensions are for guidance only/the positions of wall fixing must be checked when product is received.

FAQs

- Q: How big is the plumbing void at the back of the furniture?
A: 52mm.
- Q: Is the handle fitted?
A: No, the handle needs fixing. The door includes two holes, drilled through, spaced 224mm apart. Handles are included with the unit.
- Q: Is the door reversible?
A: No, only left hand hinges.
- Q: How deep is the unit with door open?
A: Approx 610mm (at 90 degrees).
- Q: Is the shelf removable?
A: No, there is one fixed shelf.
- Q: Can the door be adjusted?
A: The door can be adjusted as detailed in the supplied instructions.
- Q: How do I fix the unit to the wall?
A: You can secure it to the wall drilling through the back brace.
- Q: What is the interior finish of the unit?
A: The unit interior is the same finish as the exterior.
- Q: What is the maximum water depth of the basin?
A: 64mm up to the overflow.
- Q: What is the internal depth?
A: The internal depth is 80mm.
- Q: What is the width of the Tapledge?
A: The Tapledge is 99mm wide.
- Q: What is the distance from the Taphole centre to Basin Waste?
A: 178mm.

NOTE: Colours unique to R2 - No RAL Code available