

Installation & aftercare instructions (600mm Unit Shown for Illustration Purposes)
Please retain for future reference

Installation Procedure:

Securing the unit

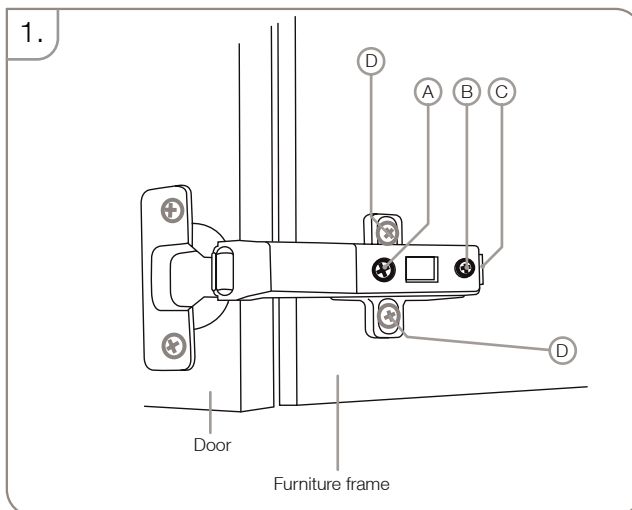
It is recommended that the unit and basin are secured to a suitably reinforced wall to ensure stability. The units can be secured through the holes in the back upper brace. The wall plugs supplied are only suitable for solid stone/brick walls. For plasterboard walls use specialist wall plugs along with supplementary wall strengthening as units can be very heavy. Seek advice from a specialist about the suitability of fixings to be used.

Wear suitable eye protection when drilling. Take care when using power tools near water - the use of a residual current device (RCD) is recommended. Beware of hidden pipes or cables. Take care when drilling tiled surfaces as the drill might slip. Use a piece of masking tape to prevent the drill from wandering.

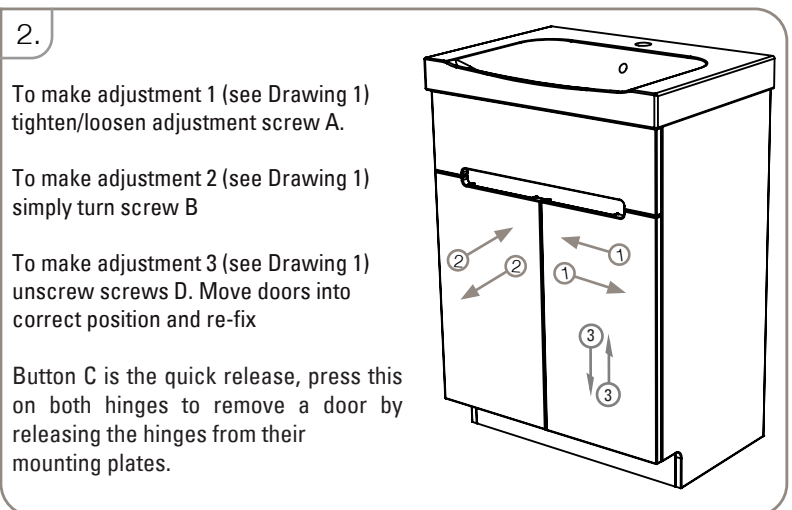
Door Hinge Adjustment

Hinges may require adjustment for correct door alignment. This is achieved with the adjustable soft close hinges using the adjustment screws A, B and D (see Drawing 1). To access these you will first have to remove the screw cap cover. The hinges also feature a quick release mechanism to quickly and easily detach the door from the furniture frame, this is activated by pressing button C (see Drawing 1).

Drawing 1

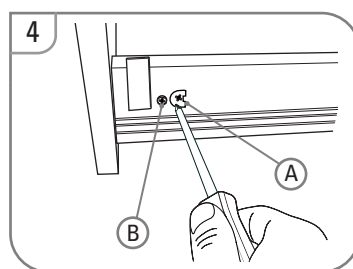
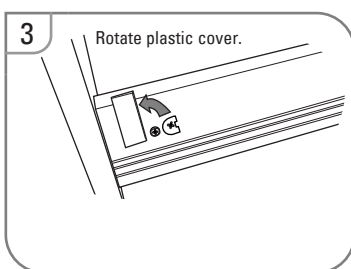


Drawing 2



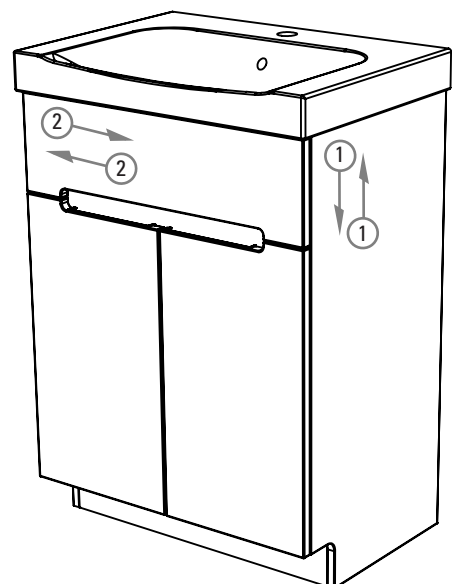
Drawer Fascia Adjustment

Fascias may require adjustment for correct alignment. If adjustment is required follow instructions below.



To make adjustment 1 (Up and Down) turn screw A (see drawing 4)

To make adjustment 2 (Left and Right) turn screw B (see drawing 4)

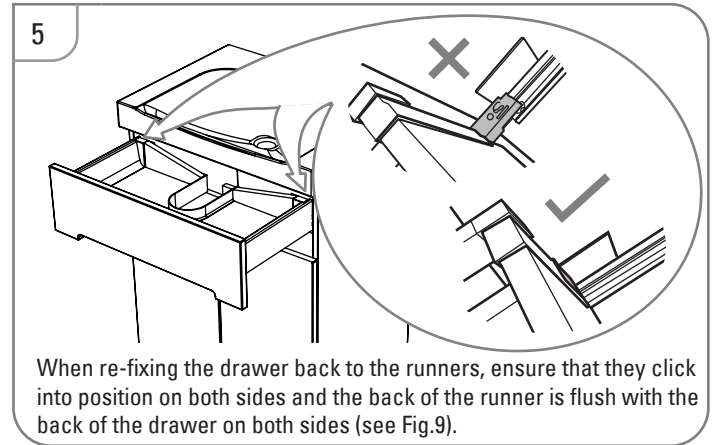
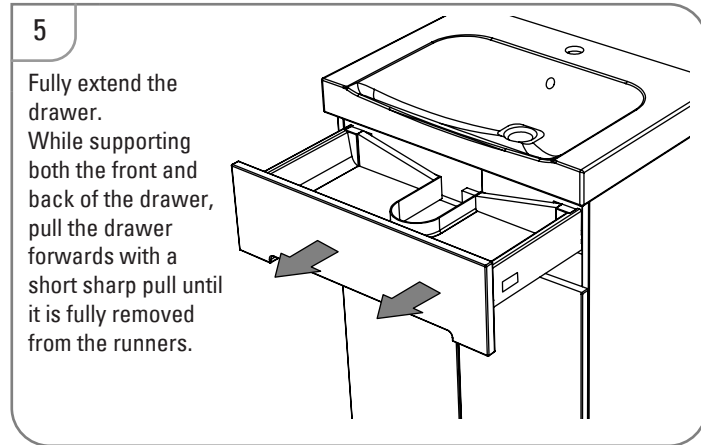


Installation & aftercare instructions (600mm Unit Shown for Illustration Purposes)
Please retain for future reference

Installation Procedure:

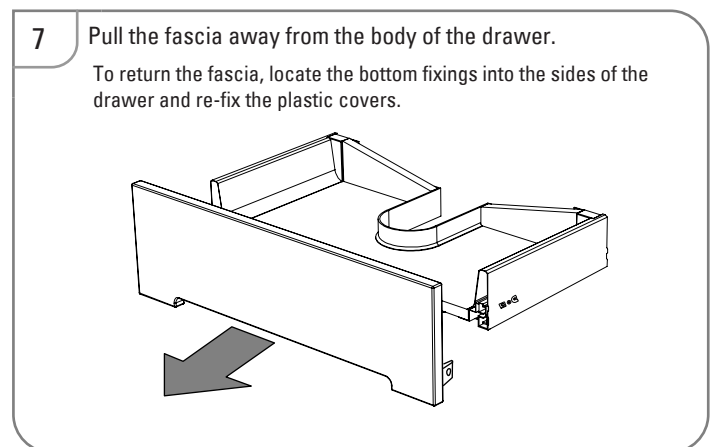
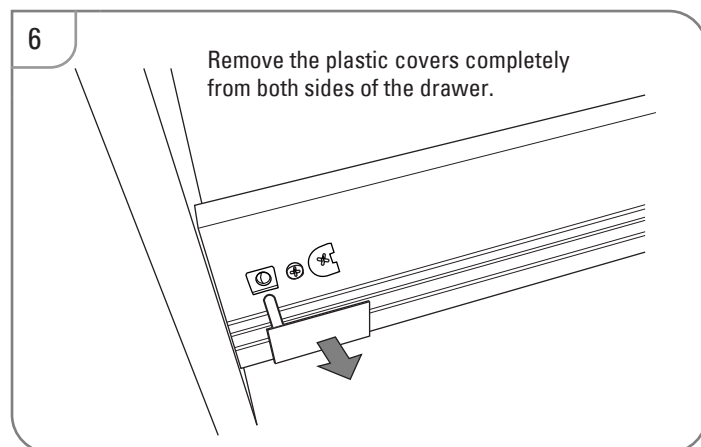
Removing the Drawer

To remove the drawer, please follow the instructions below:



Removing the Fascia

If it is faulty or damaged, the fascia can be removed and replaced. To remove the fascia please follow the instructions below:



Fitting the Basin

Once the basin has been plumbed in, finish by securing to the washstand using a silicone sealant (not supplied).

Furniture Aftercare Instructions

As with all wooden furniture, this product should be treated with care.

We recommend...

- Wipe away any water splashes or condensation after use. Excessive exposure to water will deteriorate the furniture.
- All bathrooms should be well ventilated with a suitable extractor fan.
- Clean with a soft damp cloth only.
- Use a wax free polish if one must be used.
- For removal of lime scale deposits use a suitable proprietary cleaner. If necessary test on an inconspicuous area first.

Please DO NOT...

- Do not scrub or scour
- Do not use abrasive cleaning agents

Replacement Components

Should you require any replacement components for this product please contact Roper Rhodes using the contact details below.

Diverge Wall Mounted Unit 800 & 1000mm

ROPER RHODES

Installation & aftercare instructions (800mm Unit Shown for Illustration Purposes)
Please retain for future reference

Installation Procedure:

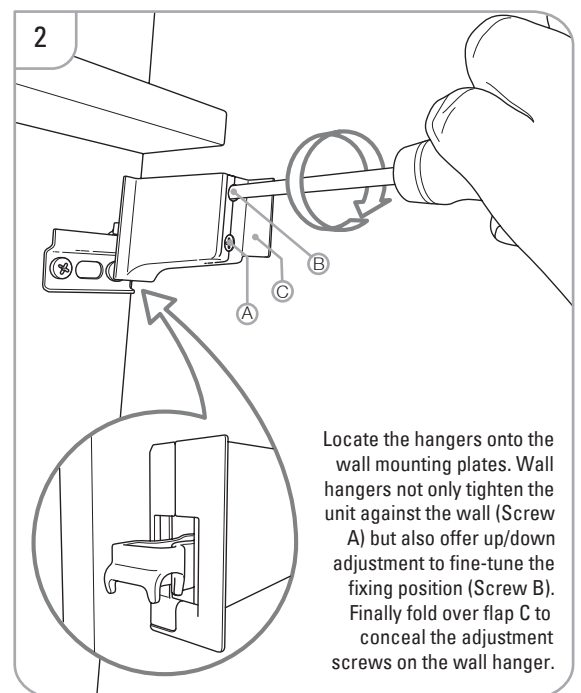
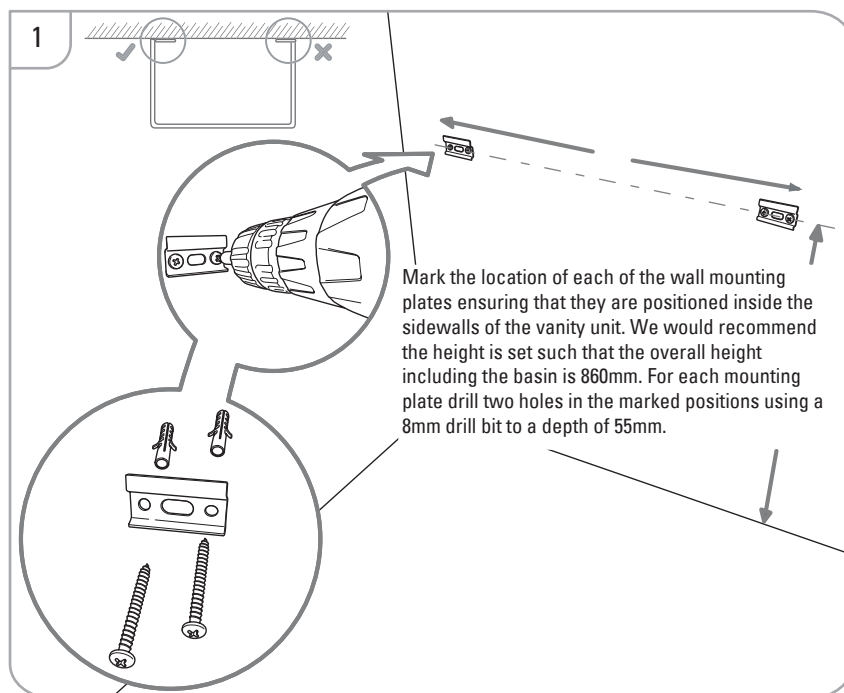
Basin selection

If using a worktop and vessel basin the supports should be used with the worktop - supplied as part of the worktop kit. There are pilot holes in the side panels at the front and rear which the rails should be fixed to. Please make sure that the tops of the rails are flush with the top of the unit to fully support the worktop.

Wallmounting the unit

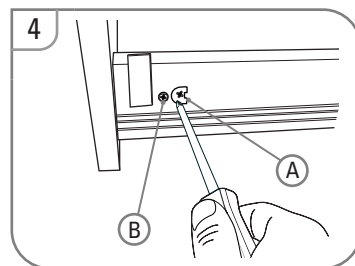
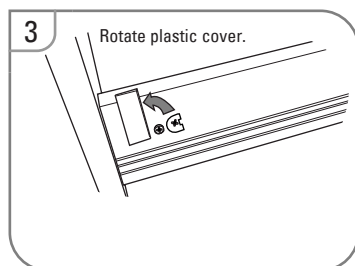
It is recommended that the unit and basin are secured to a suitably reinforced wall to ensure stability. The wall plugs supplied are only suitable for solid stone/brick walls. For plasterboard walls use specialist wall plugs along with supplementary wall strengthening as units can be very heavy. Seek advice from a specialist about the suitability of fixings to be used.

Wear suitable eye protection when drilling. Take care when using power tools near water - the use of a residual current device (RCD) is recommended. Beware of hidden pipes or cables. Take care when drilling tiled surfaces as the drill might slip. Use a piece of masking tape to prevent the drill from wandering.



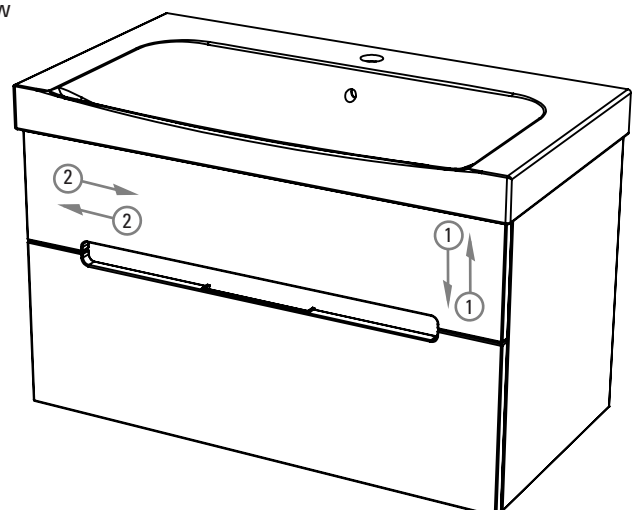
Drawer Fascia Adjustment

Fascias may require adjustment for correct alignment. If adjustment is required follow instructions below.



To make adjustment 1 (Up and Down) turn screw A (see drawing 4)

To make adjustment 2 (Left and Right) turn screw B (see drawing 4)



Diverge Wall Mounted Unit 800 & 1000mm

ROPER RHODES

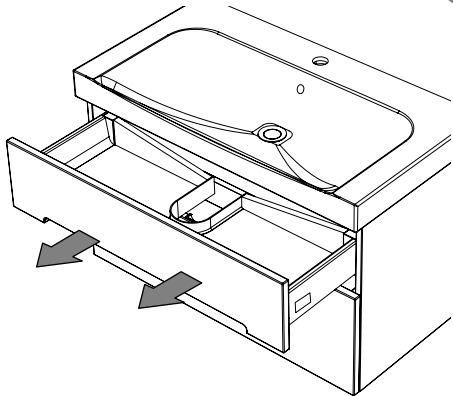
Installation & aftercare instructions (800mm Unit Shown for Illustration Purposes)
Please retain for future reference

Removing the Drawer

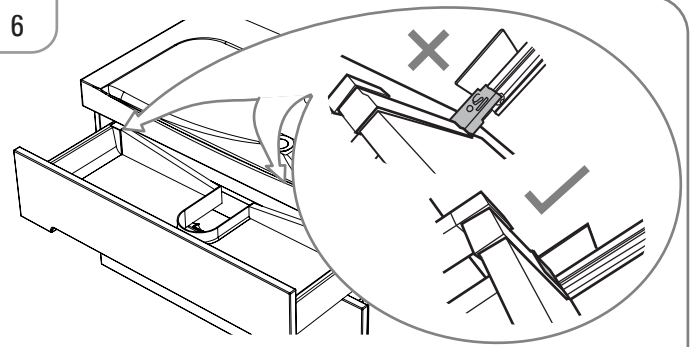
To remove the drawer, please follow the instructions below:

5

Fully extend the drawer. While supporting both the front and back of the drawer, pull the drawer forwards with a short sharp pull until it is fully removed from the runners.



6



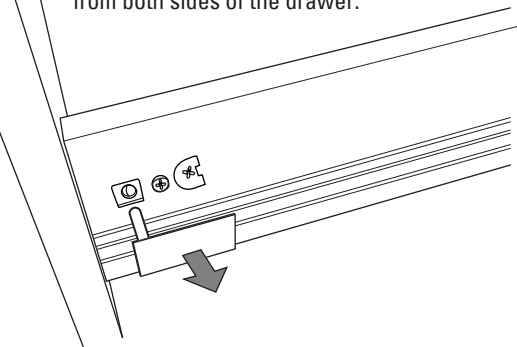
When re-fixing the drawer back to the runners, ensure that they click into position on both sides and the back of the runner is flush with the back of the drawer on both sides (see Fig.9).

Removing the Fascia

If it is faulty or damaged, the fascia can be removed and replaced. To remove the fascia please follow the instructions below:

7

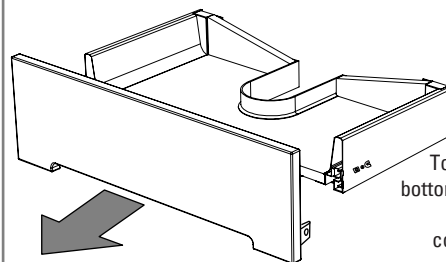
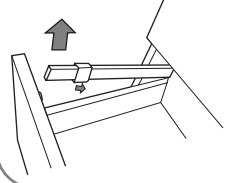
Remove the plastic covers completely from both sides of the drawer.



8

Release both rails from the drawers first (lower drawer only) then pull the fascia away from the body of the drawer.

Lower drawer rails.



To return the fascia, locate the bottom fixings into the sides of the drawer and re-fix the plastic covers. Re-fix the rails on both sides of the lower drawer.

Fitting the Basin / Worktop and basin

Once the basin has been plumbed in, finish by securing the basin / worktop to the washstand using a silicone sealant (not supplied). For worktop and vessel basin installation please see separate sheet supplied with basins / worktops

Furniture Aftercare Instructions

As with all wooden furniture, this product should be treated with care.

We recommend...

Wipe away any water splashes or condensation after use. Excessive exposure to water will deteriorate the furniture.

All bathrooms should be well ventilated with a suitable extractor fan.

Clean with a soft damp cloth only.

Use a wax free polish if one must be used.

For removal of lime scale deposits use a suitable proprietary cleaner. If necessary test on an inconspicuous area first.

Please DO NOT...

Do not scrub or scour

Do not use abrasive cleaning agents

Replacement Components

Should you require any replacement components for this product please contact Roper Rhodes using the contact details below.

Customer Services, Roper Rhodes Ltd, Brassmill Lane Trading
Estate, Bath, BA1 3JF
Tel: 01225 303 900 | Fax: 01225 448 877
Email: sales@roperrhodes.co.uk | Web: www.roperrhodes.co.uk

RR-DIVWM REV : 21.07.2014