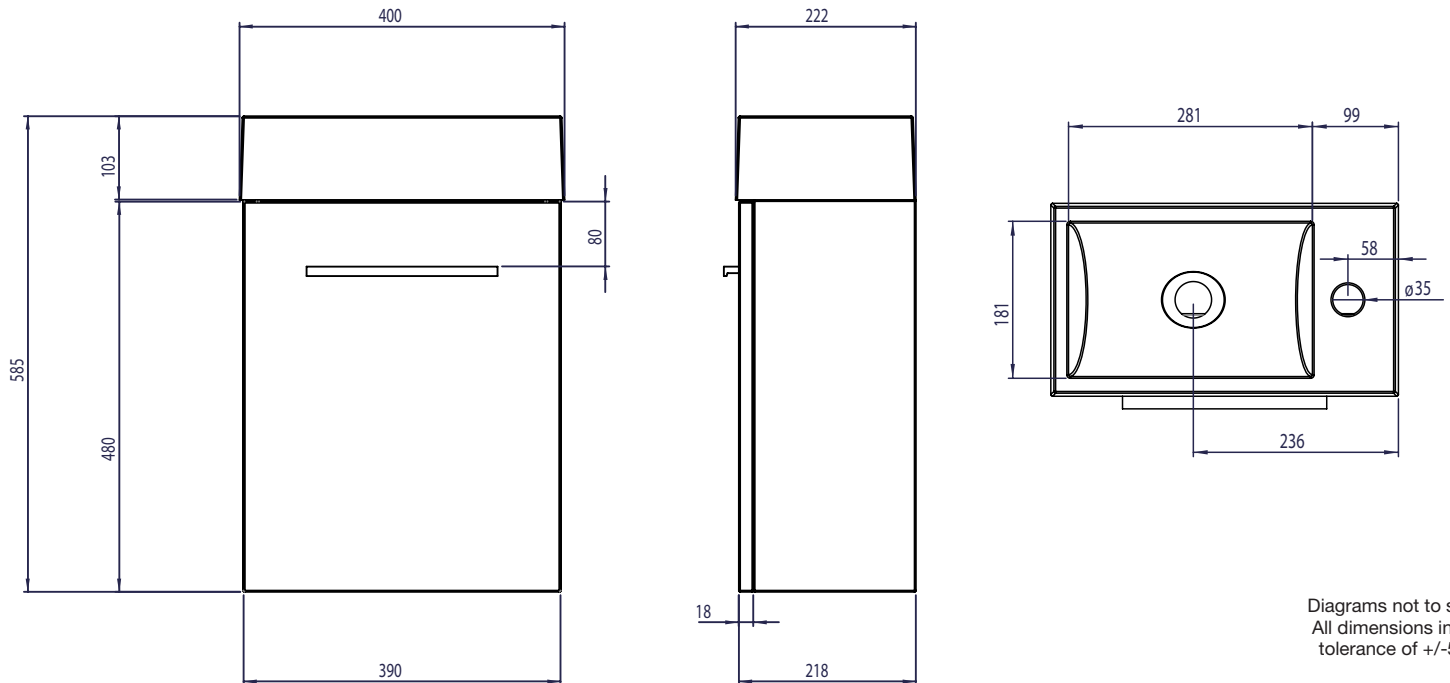


Technical Data Sheet

DRIVE Wall Mounted Unit Including Basin

Whats in the box: 1x DR4011.X + Handle/ Fixings

R2



Diagrams not to scale
All dimensions in mm
tolerance of +/-5mm

Materials

Carcass: 18mm Painted MDF

Fascia Components: 18mm Painted MDF

Basin: Isocast

*Dimensions are subject to change, customers are advised to measure actual product before commencing installation.

**Fixing point dimensions are for guidance only/the positions of wall fixing must be checked when product is received.

FAQs

- | | |
|---|---|
| Q: How big is the plumbing void at the back of the furniture? | A: 52mm. |
| Q: Is the handle fitted? | A: No, the handle needs fixing. |
| Q: Is the door reversable? | A: No, only left hand hinges. |
| Q: How deep is the unit with door open? | A: Approx 610mm (at 90 degrees). |
| Q: Is the shelf removable? | A: No, there is one fixed shelf. |
| Q: Can the door be adjusted? | A: The door can be adjusted as detailed in the supplied instructions. |
| Q: How do I fix the unit to the wall? | A: You can secure it to the wall drilling through the back brace. |
| Q: What is the interior finish of the unit? | A: The unit interior is the same finish as the exterior. |
| Q: What is the maximum water depth of the basin? | A: 64mm up to the overflow. |
| Q: What is the internal depth? | A: The internal depth is 80mm. |
| Q: Whats is the width of the Tapledge? | A: The Tapledge is 99mm wide. |
| Q: What is the distance from the Taphole centre to Basin Waste? | A: 178mm. |

NOTE: Colours unique to Roper Rhodes - No RAL Code available