

Shower Riser Kits

INSTALLATION & AFTERCARE INSTRUCTIONS

Please retain for future reference

This guide provides instruction for the installation operation and maintenance of a variety of shower riser kit systems. Product appearances may vary, but the installation methods are similar. Please follow the valve installation instructions before installing any riser kits.

We recommend these products are installed by a qualified plumber. Some diagrams are for illustrative purposes only and actual product may differ slightly. In the unlikely event you find there are parts missing please contact customer services using the contact details at the foot of the page.

IMPORTANT

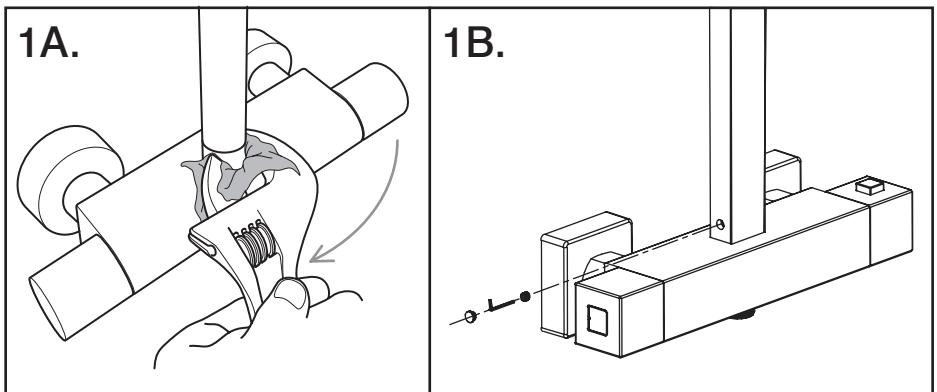
Wear suitable eye protection when drilling. Take care when using power tools near water - the use of a residual current device (RCD) is advised. Beware of hidden cables or pipes. When drilling tiled surfaces, a piece of masking tape applied to the wall before marking out the fixing holes will stop the drill wandering.

INSTALLATION

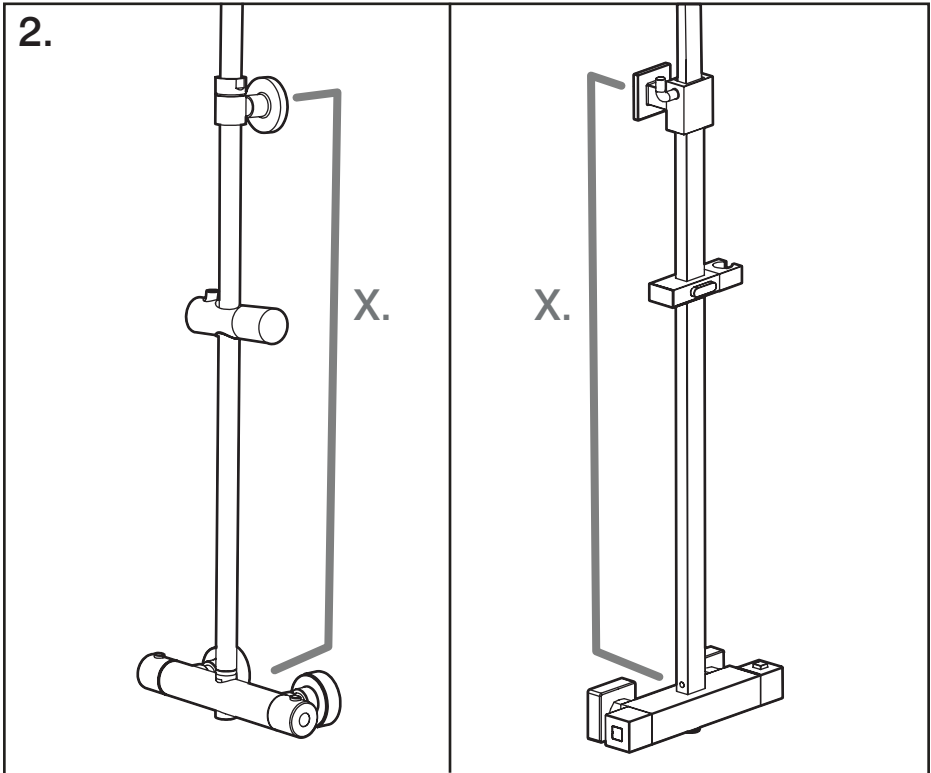
1. If the shower handset slider is not pre-assembled to the rail, ensure this is assembled before fastening the riser rail to the pre-installed bar valve, as shown in the options below.

For round riser rail fixings with 1/2" threaded connections, ensure to place a piece of fabric between the spanner & fixing nut to prevent possible damage to the chrome finish (A.)

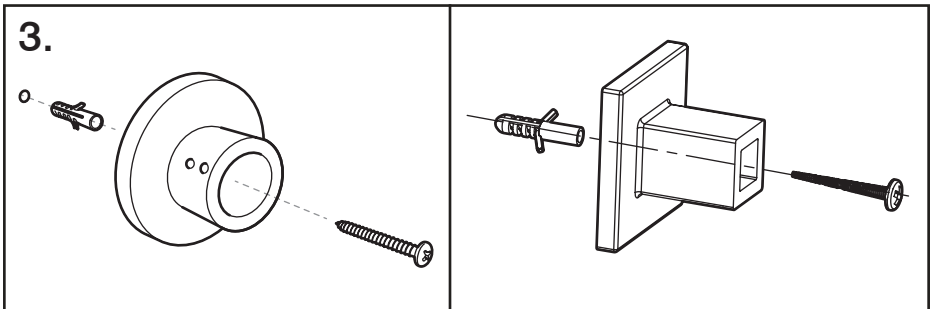
For square bar valve systems, remove the grub screw cover cap and loosen the grub screw at the bottom of the riser rail. Slide the riser rail assembly onto the bar valve top outlet and secure in place with the grub screw. Replace the grub screw cover cap (B.)



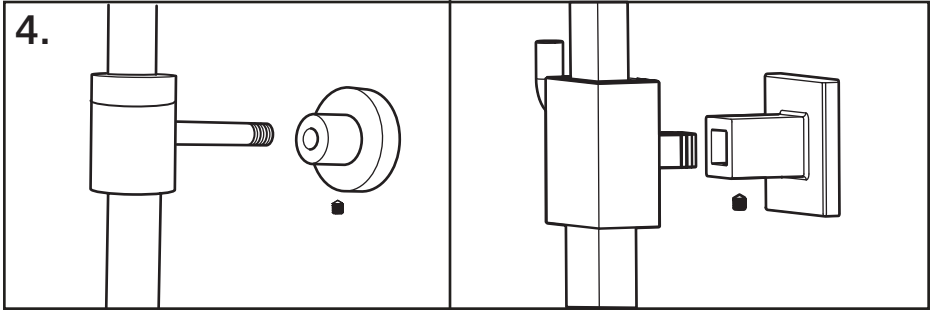
2. Measure the distance (X) from the valve to the location of the wall bracket and mark the location of the wall bracket on the wall with a pencil. Drill an appropriately sized hole for the fixings supplied in the finished wall surface. Wall plugs provided are suitable for stone or brick walls. For other wall types use appropriate wall plugs. If in doubt consult an expert.



3. Secure the wall bracket in place using the fixings supplied.

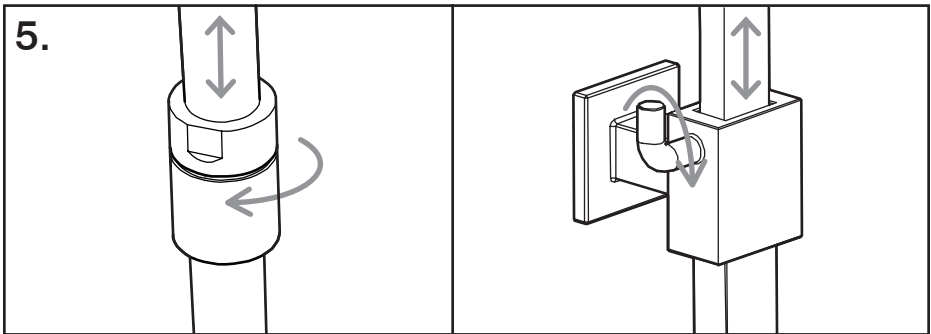


4. Offer up the riser rail to the wall bracket and secure in place using the grub screw on the wall bracket body.

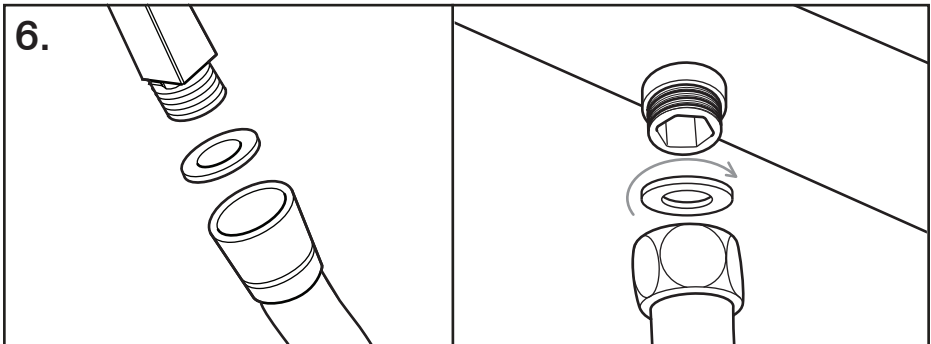


5. With the riser rail secured to the wall bracket, screw the shower head onto the 1/2" outlet. At this point the riser rail can be adjusted to the desired height.

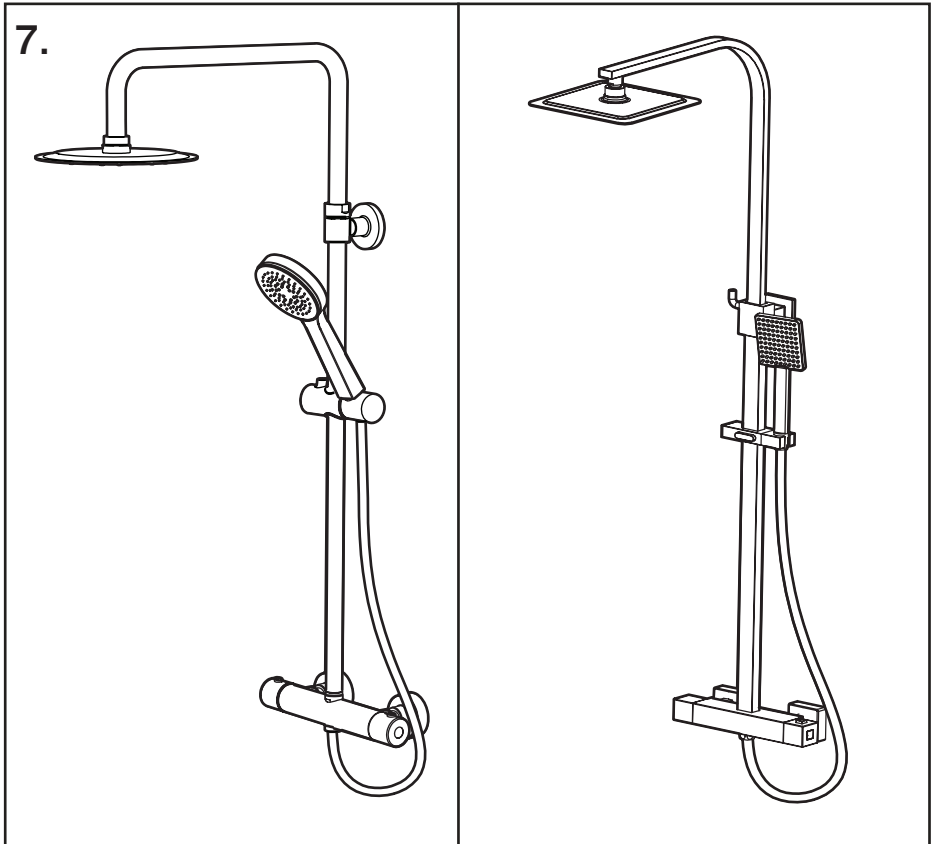
For round systems, the riser rail fixing nut can be loosened and the rail can slide up or down to the chosen head position. Tightening the nut will fix the adjustable riser in place. For square systems there is a lever on the side of the riser rail that allows the rail height to be adjusted and then fixed in place.



6. Assemble the shower hose to the threaded outlets on the bar valve body and the shower handset. Ensure that the rubber o-ring is positioned inside the hose swivel nuts to form a watertight seal at both ends.



7. The riser rail kit is now fully installed and the shower system is ready for use. The rail and shower head height can still be adjusted after installation by following the method in step 4.



CLEANING AND MAINTENANCE

Whilst all these items have a high quality durable finish, they should nevertheless be treated with care.

Surfaces should be cleaned using only a soft damp cloth and clean water then dried using a soft cotton cloth. Bath cleaning products, even non-scratch ones, could damage the finished surface.