

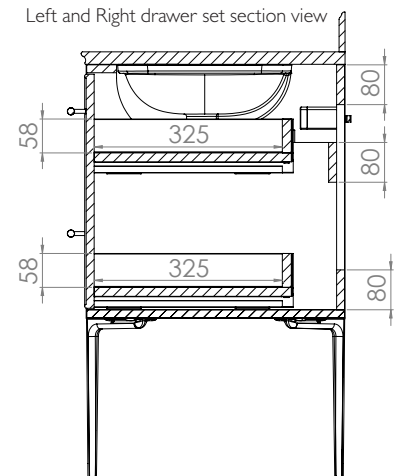
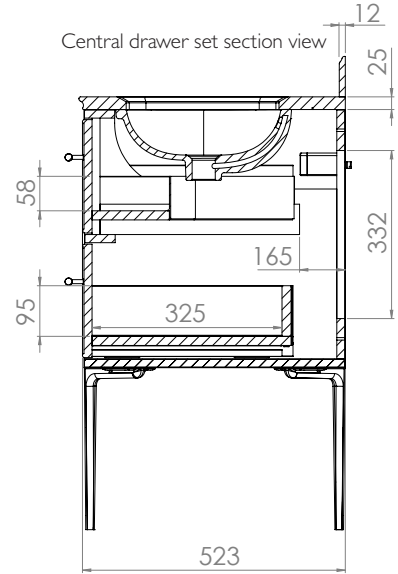
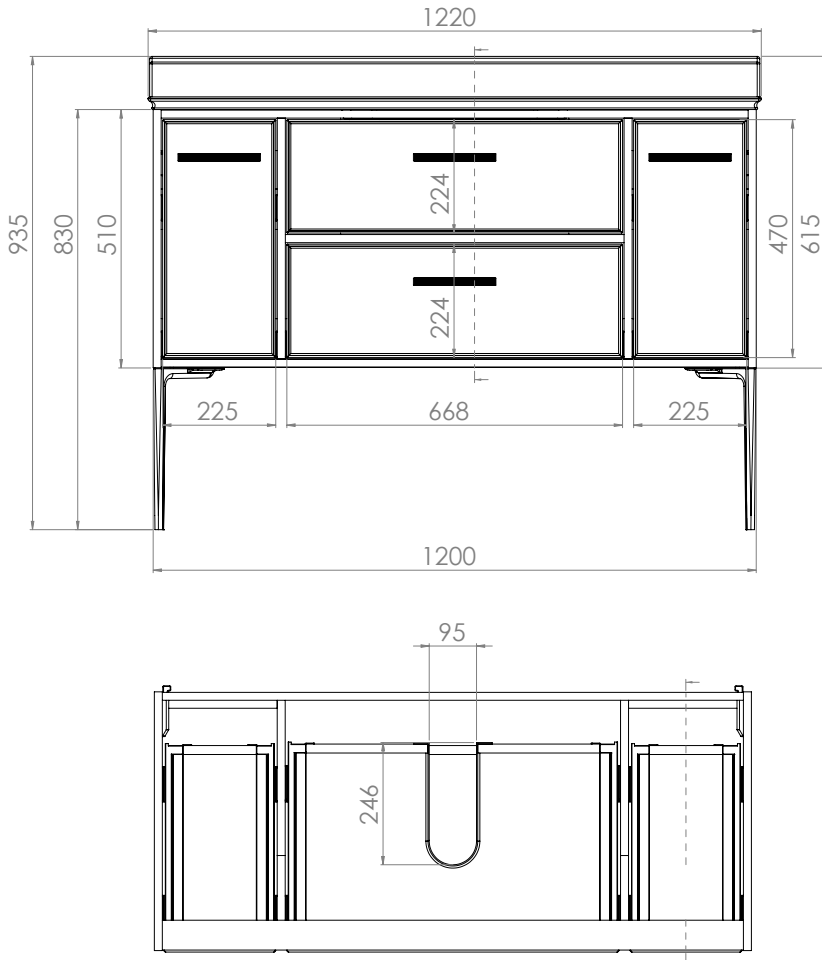
TECHNICAL DATA SHEET

WALCOT 1200mm Single Basin UNIT

What's in the box: 1x WA12S-X + Fixings

ROPER RHODES®

*Reference basin & worktop TDS for further info



Diagrams not to scale
All dimensions in mm
tolerance of +/-5mm

Materials

Carcass: 16mm / 19mm

Fascia Components: 16mm / 19mm

Real Wood Veneer:

Please note that this unit is made using real wood veneer which is lacquered for protection. This is a natural product which will vary in colour and grain pattern. Every piece is unique and the timber finish will also develop patination over time due to light and environment. This is perfectly natural and will not detract from the function of the product.

**Dimensions are subject to change, customers are advised to measure actual product before commencing installation.

***Fixing point dimensions are for guidance only/the positions of wall fixing must be checked when product is received.

Extra Dimensions:

Central Top Drawer (DxWxH):

325mm x 630mm x 58mm

Central Top Drawer Cut Out (WxD):

94mm x 246mm

Central Bottom Drawer (DxWxH):

325mm x 630mm x 95mm

Left and Right Drawers (DxWxH):

325mm x 190mm x 58mm

TECHNICAL DATA SHEET

WALCOT 1200mm Single Basin UNIT

ROPER RHODES®

What's in the box: 1x WAL2S-X + Fixings

FAQs

Can the unit be wall hung without legs?

Yes, the unit can be wall hung without legs but wall plates and all rear fixing points must be in use at all times.

How big is the plumbing void?

165mm deep and located behind the drawers. The top drawer has a cut-out for pipework. Side access is restricted by internal panels supporting the tall drawers.

Are the handles fitted?

No, there are multiple handle options for which the holes need drilling.

Are the runners soft close?

The runners are both soft close and quick release.

How deep is the unit when the drawers are fully open?

Approx: 850mm.

Can the drawers be adjusted?

The drawer fascia's can be adjusted as detailed in the supplied instructions.

Do the legs come pre-applied for furniture?

No - refer to instructions for installation method.

What is the interior finish of the unit?

The unit interior finish is matched to the exterior finish, except for the back braces which are dark grey.

Can other worktops be used on these units.

No – the Walcot worktops have been designed to be a perfect fit to the units.

Do I have to use the upstand on the worktops.

No – this is optional to allow tiling down to the worktop.

Can I use a vessel / countertop basin on these units.

No – the worktops are pre-cut for undermount basins.

NOTE: Colours unique to Roper Rhodes - No RAL Code available