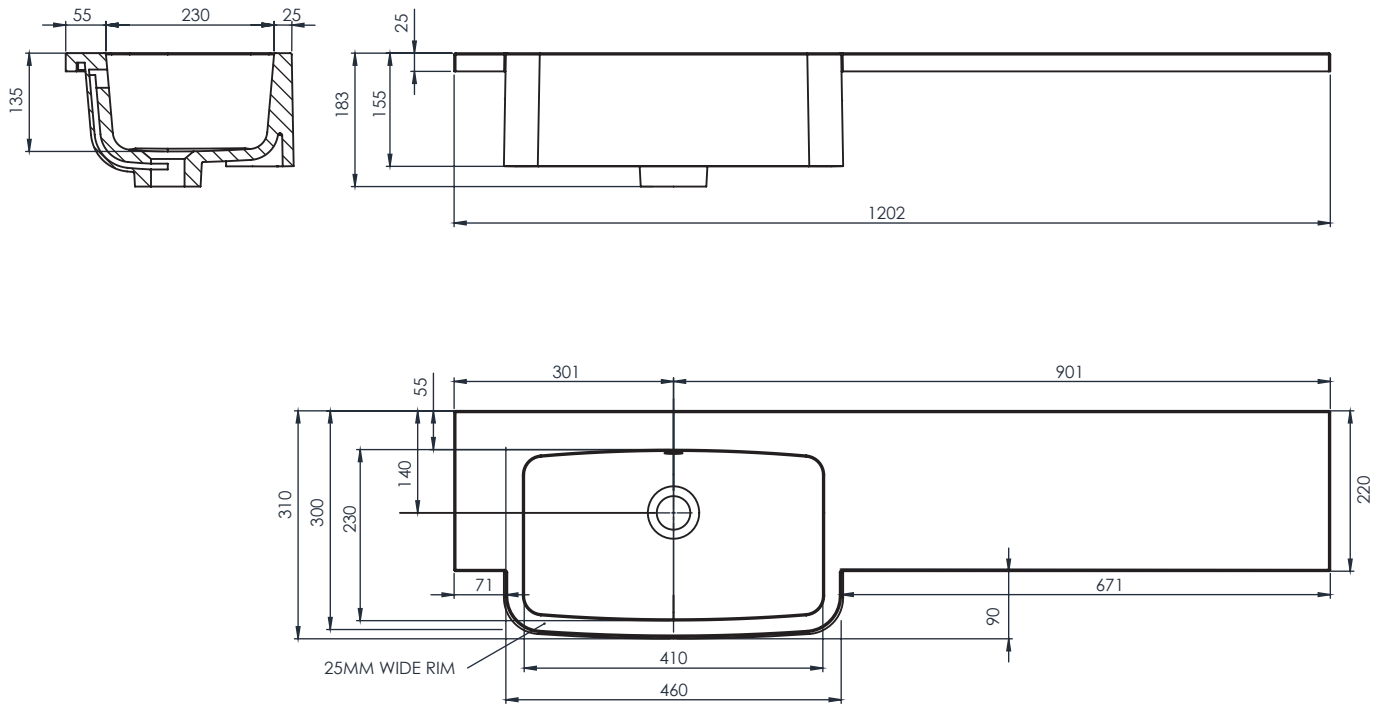


Technical Data Sheet

1202mm SLIM Isocast Basin

Whats in the box: 1x IS1202SM.L or IS1202SM.R



* Left Hand Basin Shown
Mirror Dimensions for Right Hand Basin

Diagrams not to scale
All dimensions in mm
tolerance of +/-5mm

**Dimensions are subject to change, customers are advised to measure actual product before commencing installation.

Materials

Basin: Isocast (Gloss Finish)

Has many names including:

- Gelcoat
- Cultured marble
- Cast mineral marble
- Synthetic marble

Base material is 70% natural (aggregate dolomite rock - calcareous magnesium carbonate). A misconception is that this material is completely manmade. The other 30% is a mixture of various polyester resins. 1.5 - 2.0mm Top coating of "gelcoat" which is the proprietary name for the polyester resin used to seal all top faces of the basin / worktop. Tolerance of +3/-0mm. Ceramic is more typically +5/-5mm. Fully tested against multiple stains which can either be removed with standard cleaners (autosol for example) or the specialist clean and shine repair kits.

FAQs

Q: What is the maximum water depth of the basin?

A: 89mm up to the overflow (6.32Ltrs).

Q: What is the internal depth?

A: The internal depth is 134mm.

Q: Whats is the width of the Tapledge?

A: The Tapledge is 55mm wide.

Q: What is the distance from the Taphole centre to Basin Waste?

A: 140mm.

Q: Is the taphole pre-cut?

A: No, The taphole needs to be cut by fitter (Ø35mm hole size).