

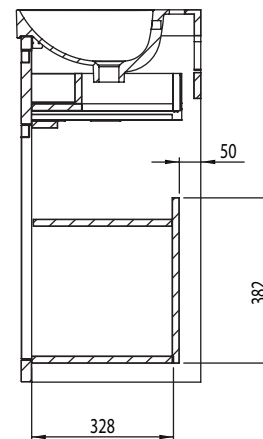
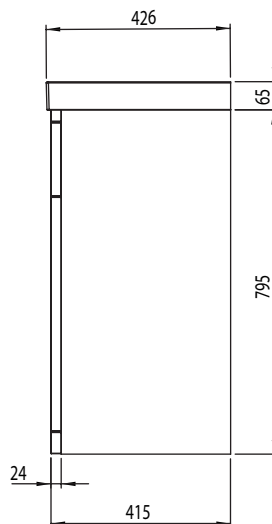
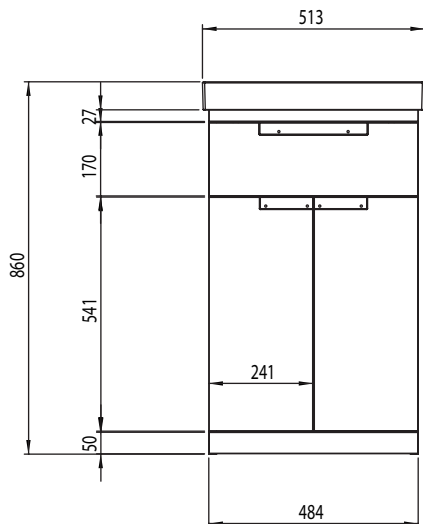
Technical Data Sheet

PLATFORM 500mm Floor Mounted Unit

Whats in the box: 1x PLT5010.X + Fixings



*Reference basin TDS for further info



Diagrams not to scale
All dimensions in mm
tolerance of +/-5mm

Materials

Carcass: 18mm MDF & 16mm MFC

Fascia Components: 24mm Painted MDF

**Dimensions are subject to change, customers are advised to measure actual product before commencing installation.

***Fixing point dimensions are for guidance only/the positions of wall fixing must be checked when product is received.

Extra Dimensions

Internal Drawer Depth - Front to Back:

327mm

Internal Drawer Height:

70

Internal Drawer Width:

406mm

Drawer Cut Out (W&D):

173mm x 227mm

FAQs

Q: How big is the plumbing void at the back of the furniture?

A: 50mm

Q: Are the handles fitted?

A: No, handles need fitting.

Q: Are the runners and hinges soft close?

A: The runners and hinges are both soft close and quick release.

Q: How deep is the unit when the drawer and doors are fully open?

A: Approx. 780mm including handle.

Q: Can the drawer and doors be adjusted?

A: They can be adjusted as detailed in the supplied instructions.

Q: What is the interior finish of the unit?

A: White on White Units - Dark Grey for all other finishes.

NOTE: Colours unique to Roper Rhodes - No RAL Code available