

# Pursuit Wall Mounted Unit 600mm & 900mm Units

ROPER RHODES

Installation & aftercare instructions

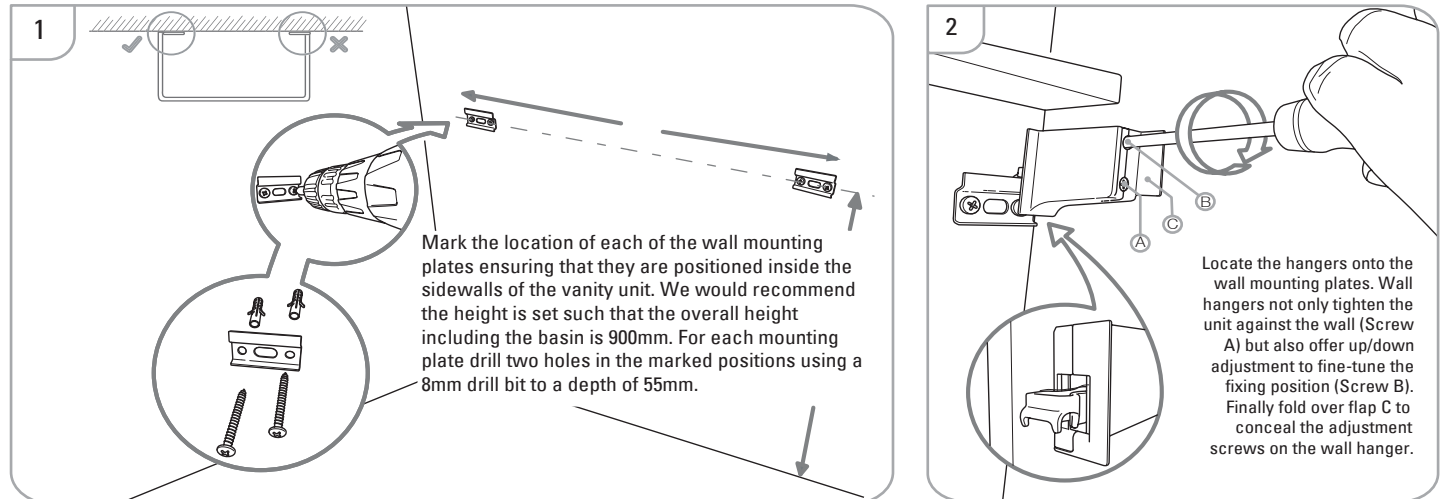
Please retain for future reference

## Installation Procedure:

### Wallmounting the units

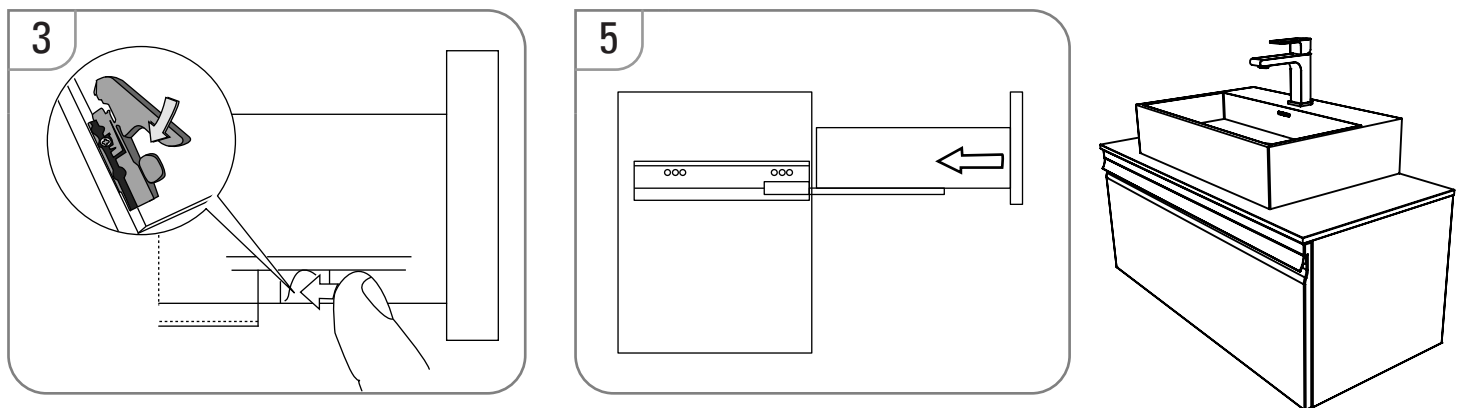
It is recommended that the unit and basin are secured to a suitably reinforced wall to ensure stability. The wall plugs supplied are only suitable for solid stone/brick walls. For plasterboard walls use specialist wall plugs along with supplementary wall strengthening as units can be very heavy. Seek advice from a specialist about the suitability of fixings to be used.

Wear suitable eye protection when drilling. Take care when using power tools near water - the use of a residual current device (RCD) is recommended. Beware of hidden pipes or cables. Take care when drilling tiled surfaces as the drill might slip. Use a piece of masking tape to prevent the drill from wandering.



### Drawer / Fascia Removal

To remove the drawer from the unit fully extend the drawer from the unit. On the underneath of either side of the drawer are two plastic clips (see Fig. 3) that need to be pushed to release the drawer box from the runners. Pull the drawer box upwards and outwards to remove from the unit. When replacing the drawer box onto the runners, ensure that they click into position on both sides of the drawer box. If the fascia needs to be removed, simply unscrew the 4/6 screws inside the drawer box, remove the fascia and replace.



### Making a 1200mm Double Unit

A 1200mm double unit can be made from two single 600mm units. These should be mounted side by side on the wall and levelled. They should then be fixed together (through the side panels). Furniture fixing bolts (not supplied) can be used for this. When putting two 600mm units together it is important to leave a small gap between the two units in order to ensure that both drawers can open properly.

### Furniture Aftercare Instructions

As with all wooden furniture, this product should be treated with care. Basin and worktop installation instructions are included with these items. It is important that the worktop is sealed to the unit using a silicone sealant (not supplied).

#### We recommend...

Wipe away any water splashes or condensation after use. Excessive exposure to water will deteriorate the furniture.  
All bathrooms should be well ventilated with a suitable extractor fan.  
Clean with a soft damp cloth only.  
Use a wax free polish if one must be used.  
For removal of lime scale deposits use a suitable proprietary cleaner. If necessary test on an inconspicuous area first.

#### Please DO NOT...

Do not scrub or scour  
Do not use abrasive cleaning agents