

# TECHNICAL DATA SHEET

## ARUBA SCT STD Depth Basin - AR3SCBAS

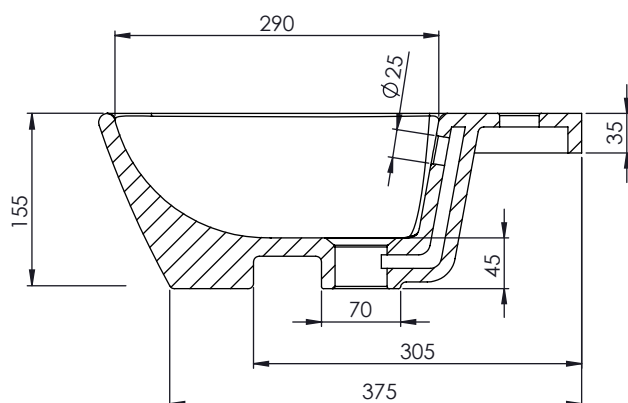
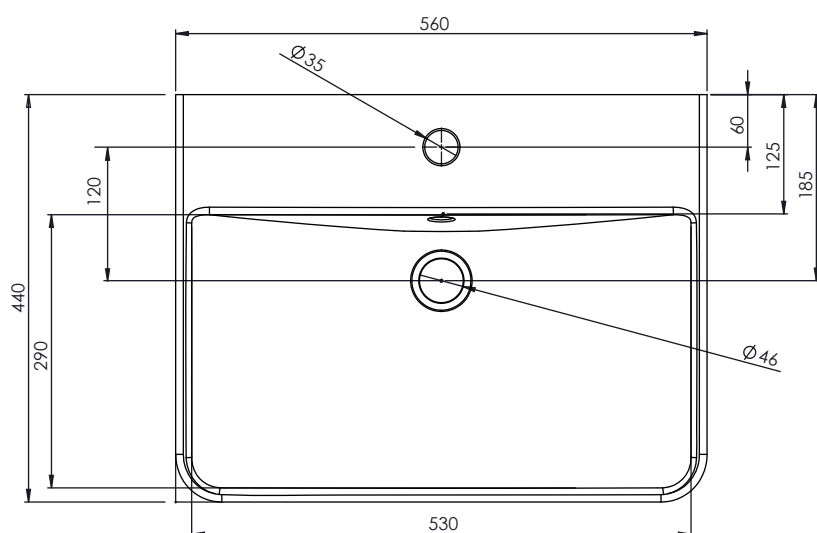
ROPER RHODES®

NO.	Description	Product Code	Template included	Gross Weight
I	Semi Recess Basin - Standard Depth	AR3SCBAS	YES	13KG



### DIMENSIONS

DIAGRAMS NOT TO SCALE | ALL DIMENSIONS IN MM TOLERANCE OF  $\pm 5$ MM  
ALL PRODUCTS CONFORM TO BRITISH STANDARDS



\*Dimensions are subject to change, customers are advised to measure actual product before commencing installation.  
\*\*Fixing point dimensions are for guidance only. The positions of fixings must be checked when product is received.

### FAQs

Q: What is the maximum water depth of the basin?

A: 110mm up to the overflow.

Q: What is the width and length of the Basin Belly?

A: 525mm wide and projects 135mm from the worktop.

Q: What is the depth of the Tapledge?

A: The Tapledge is 125mm deep.

Q: Can you cut the worktop at either end of the bowl?

A: Yes, worktop can be cut to suit installation requirement with or without design and filler panels.

Q: What are the taphole/ basin waste sizes?

A: All sizes are to British Standard - (BS EN 31)

Diameter of the central tap hole = 35mm:  $\pm 2/-1$ mm

Bore of the waste outlet hole = 46mm:  $\pm 2/-3$ mm

Diameter of the base for the seal between the waste outlet hole and the waste fitting =  $\geq 60$  mm

Q: What is the finish on the ceramic glaze?

A: Keramik White