

TECHNICAL DATA SHEET

Aruba 550 Basin - AR550SB

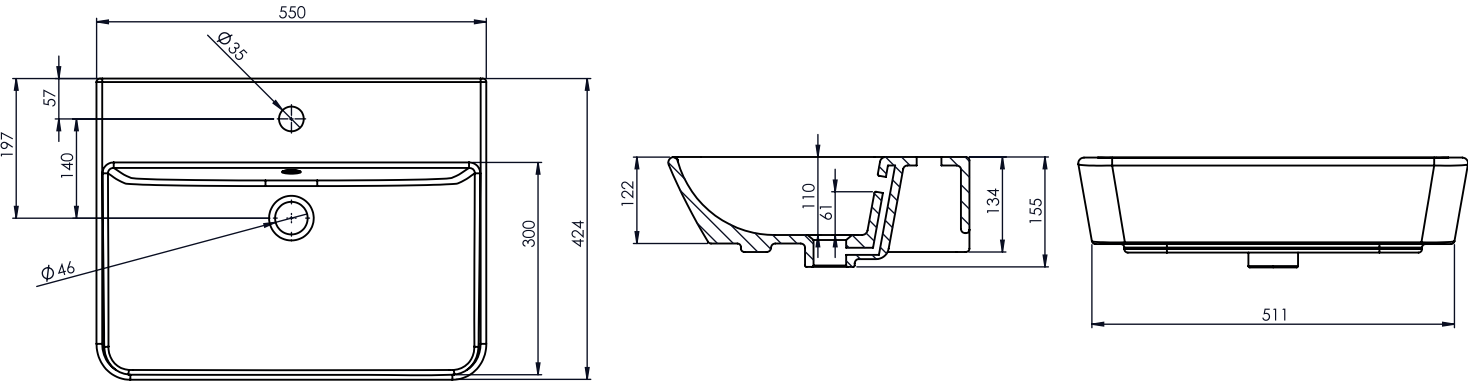
ROPER RHODES®

NO.	Description	Product Code	Fixings included	Gross Weight
I	Compass 550 Basin	AR550SB	NO	16 KG



DIMENSIONS

DIAGRAMS NOT TO SCALE | ALL DIMENSIONS IN MM TOLERANCE OF ± 5MM
ALL PRODUCTS CONFORM TO BRITISH STANDARDS



*Dimensions are subject to change, customers are advised to measure actual product before commencing installation.
**Fixing point dimensions are for guidance only. The positions of fixings must be checked when product is received.

FAQs

Q - What is the maximum water depth of the basin?
A - 61mm up to the overflow.

Q - Can this basin be wall hung?
A - Yes.

Q - Can this basin be mounted using a semi-pedestal?
A - Yes, use code ARSMP.

Q - How thick is the basin edge/rim?
A - 8mm

Q - Does the basin have an integral overflow?
A - Yes

Q - What finish is the ceramic glaze?
A - Keramik White

Key Dimensions Descriptions	Key Dimensions (mm)
Internal Bowl Depth	110mm
Internal Bowl Front to Back	300mm
Internal Bowl Left to Right	530mm
Tap Ledge	124mm
Taphole Centre to Waste Centre	140mm
Taphole Centre to Back of Basin	57mm
Waste Centre to Back of Basin	197mm
Width of Rear Basin	550mm
Basin Depth	110mm