

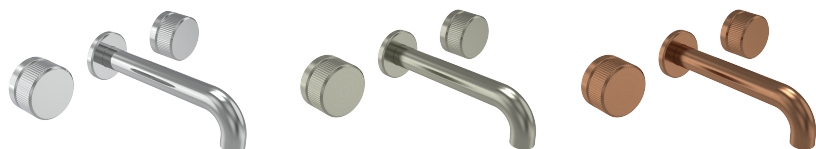
## Technical Data Sheet

# ROPER RHODES®

### Faber Wall Mounted Mixer Without Waste

T501902 (Chrome) T501906 (Brushed Nickel) T501908 (Brushed Bronze)

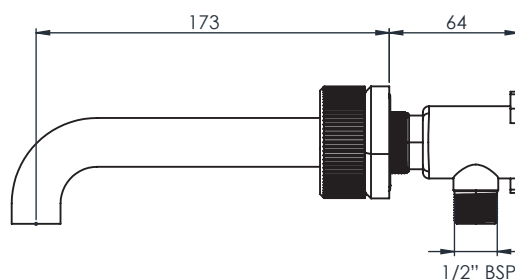
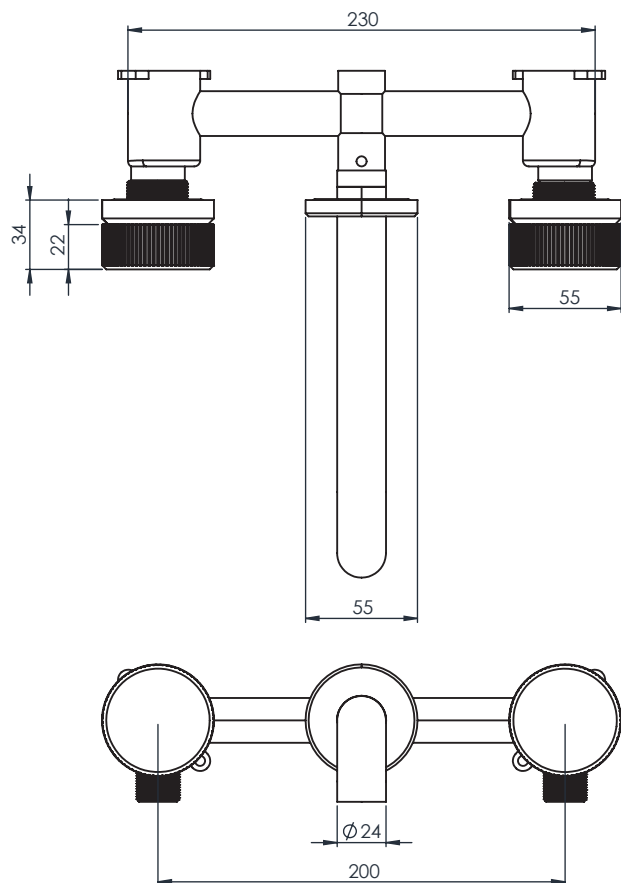
**FLOW RATE DATA IS TESTED UNDER  
LABORATORY CONDITIONS: ACTUAL  
FLOW RATE MAY VARY DEPENDING ON  
DOMESTIC SUPPLY AND ACCESSORIES**



Minimum Pressure:	0.2 BAR
Pressure:	Flow Rate (l/min)
0.2 BAR	11
0.3 BAR	13.7
0.5 BAR	17.2
1 BAR	24

## Dimensions

Diagrams not to scale. All dimensions in mm (tolerance of +/-5mm)



## FAQs

**Does a click waste come with this product?** No, a click-waste is not supplied with this product.

**Can this product be used as a bath filler?** Yes, please refer to the flow rate information for suitable minimum pressure.

**Can the hot/cold valves be switched to swap handle rotation direction?** Yes, swapping the valves will invert the operation direction.

**What size are the plumbing connections?** The inlets on this product are 1/2" BSP.

**How should I clean this product?** We recommend using only a damp cloth and warm water. Do NOT use abrasive cleaning products.