

Technical Data Sheet

1170mm Wall Hung Frame and Cistern

No.	Description	Product Code	Fixings Included?	Gross Weight
1	Wall Hung Frame and Cistern	TR9006	Yes	17KG

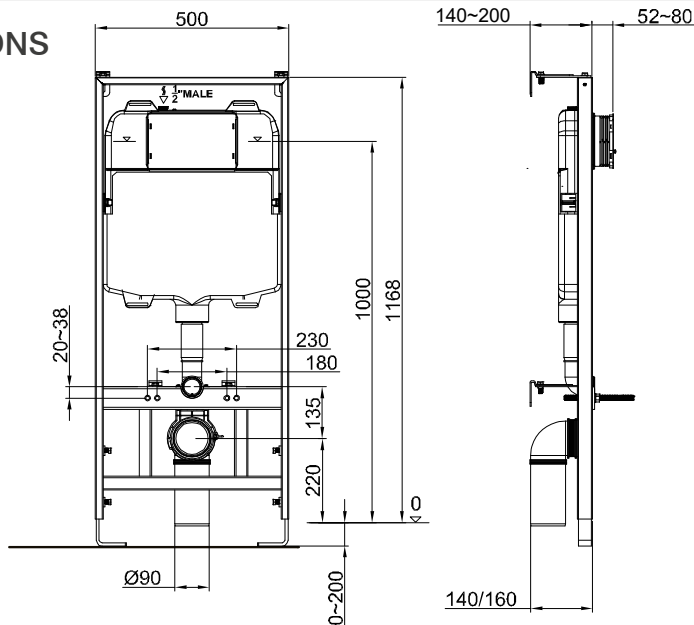


Now comes fitted with air gap inlet valve
Inlet valve WRAS approval number 2105042

KEY FEATURES

- 6/3 litre flush option
- pneumatic flush valve and push button operation
- side entry 1/2" (male) inlet valve
- front access for maintainance
- 0.1-10.0 bar working presssure range
- polystyrene insulation jacket
- adjustable legs
- adjustable depth
- brackets, fixings and 1st fit protective covers included

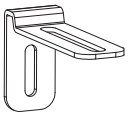
DIMENSIONS



DIAGRAMS NOT TO SCALE | ALL DIMENSIONS IN MM TOLERANCE OF ± 5 MM
ALL PRODUCTS CONFORM TO BRITISH STANDARDS

note

For installations where the waste pipework runs straight out the back, a minimum depth of 110mm can be achieved by attaching the angled brackets directly to the frame



FAQs

Q - Is the frame supplied with a flush plate?

A - No, this is purchased separately

Q - Can the flush plate be mounted on top?

A - No the flush plate can only be mounted on the front of the cistern

Q - Can the waste pipe be routed out to the side of the frame?

A - Yes, with a minimum distance of 170mm from wall to the front of the frame.

Q - What is the flusing volume of the cistern?

A - The cistern has full flush of 6 litres and reduced flush of 3 litres.

Q - What weight has the frame been tested to?

A - All wall hung WC frames are designed and tested to 400kg.