

Technical Data Sheet

Touch Sensor Dual Flush Plate - TR9016

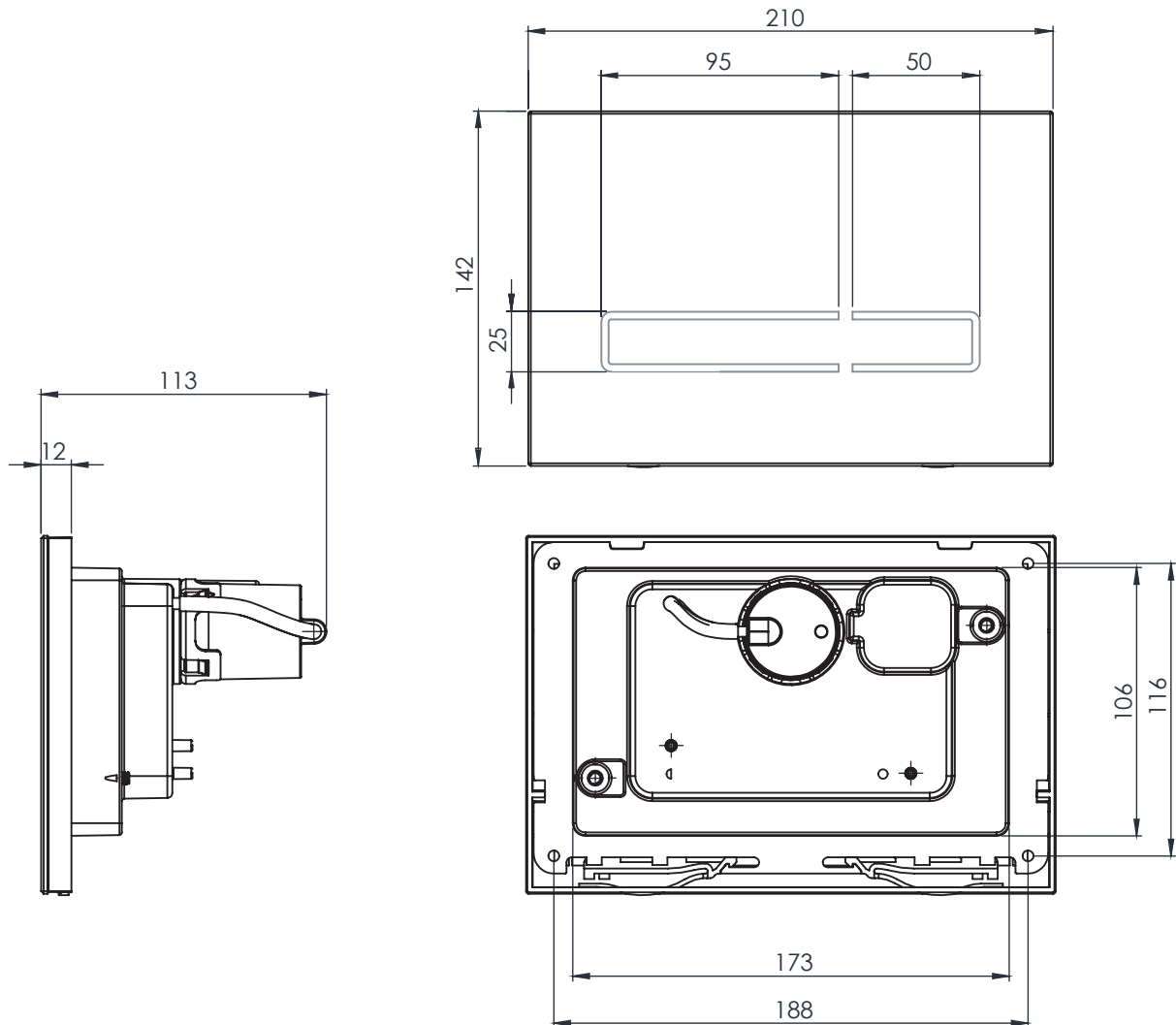
ROPER RHODES®

No.	Description	Code	Fixings Included
1	Touch Sensor Flush Plate	TR9016	YES



Dimensions - TR9016

Diagrams not to scale. All dimensions in mm (tolerance of +/-1mm)



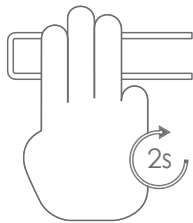
FAQs

The touch sensor is not working?

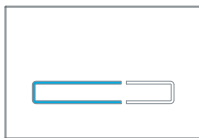
Check that 100% new batteries are inserted correctly into the battery compartment. Ensure that the battery compartment is correctly aligned so that the spring contacts align with the terminals on the top of the battery pack.

Still not flushing?

Please check the FAQs related to the cistern/frame that is installed. You will need to touch with at least 3 fingers to make a conscious signal to the sensor.



Three Finger Activation: Use a minimum of three fingers touching the sensor for two seconds to activate.



Full Flush: Touch the longer decal side with three fingers for two seconds to activate the flush. The LED lights will illuminate.



Reduced Flush: Touch the shorter decal side with three fingers for two seconds to activate the flush. The LED lights will illuminate.

How will I know that the batteries are running low?

Please refer to instructions

How do I access the unit to change the batteries?

Please refer to instructions

What is the expected battery life?

Approximately 12 months using batteries of a good quality.

Can I use the sensor flush plate on furniture with a standard concealed cistern?

Yes, but only on standard depth furniture.

On slim depth furniture, the flush plate body depth would be prohibitive, so use the CSFK sensor kit, instead.