

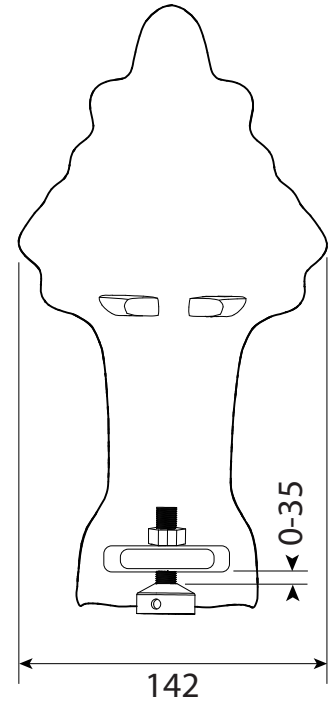
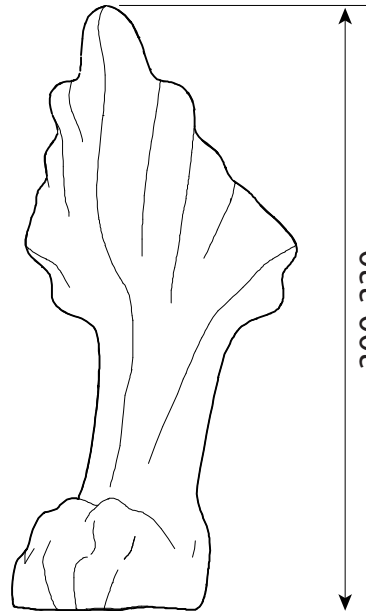
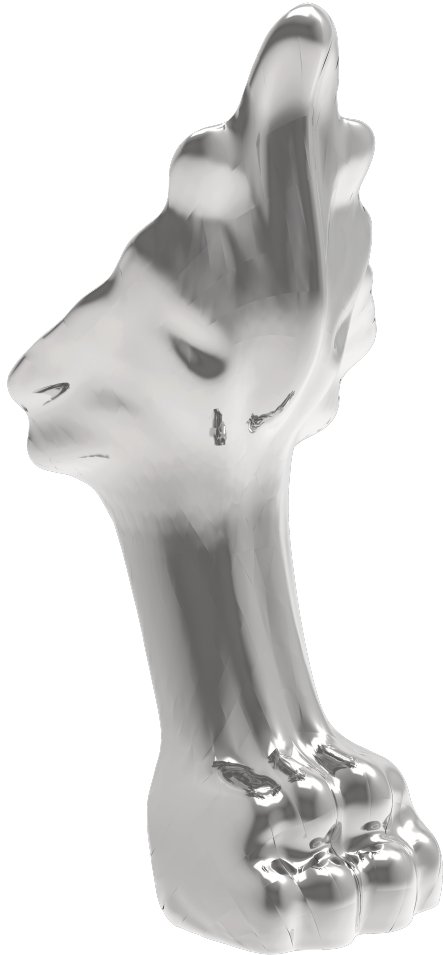
TECHNICAL DATA SHEET

Traditional Freestanding Bathub Feet - BAA104

ROPER RHODES®

NO.	Description	Product Code	Fixings included	Gross Weight
1	Traditional Freestanding Bathub Feet - Chrome	BAA104	YES	4.5KG

DIMENSIONS



DIAGRAMS NOT TO SCALE | ALL DIMENSIONS IN MM TOLERANCE OF ± 5 MM

*Dimensions are subject to change, customers are advised to measure actual product before commencing installation.

**Fixing point dimensions are for guidance only. The positions of fixings must be checked when product is received.

FAQs

Q - Can the bathtub feet be secured to the floor?

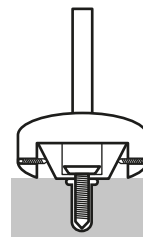
A - Yes, the feet are provided with a floor fixing kit that secures to the floor using the arrangement shown right. See instructions for more information.

Q - How many feet are supplied in a kit?

A - One kit includes FOUR bath tub feet.

Q - Which Roper Rhodes bathtubs is this feet set compatible with?

A - The feet set is universal and works with all Roper Rhodes Widcombe bathtubs.



All of our bath tubs conform with BS EN 14156 Class 1 & Class 2