
BEFORE YOU START

- The product should only be installed by a suitably qualified / competent / experienced bathroom installer.
- Check the contents of the pack for defects before installation. The supplier will not accept any refitting costs if faulty product has been fitted.
- The furniture should only be installed in a well ventilated bathroom at a distance from bath / showers to avoid splashing. It should also be protected from any shower / handset spray by a shower screen or similar.
- Make sure the unit and basin are secured to a suitably strong / reinforced wall to ensure stability.

CAUTION

- Take care when using power tools near water - the use of a residual current device (RCD) is recommended.
- Beware of hidden pipes or cables.
- Wear suitable eye protection when drilling.
- Take care when drilling tiled surfaces as the drill might slip. We recommend using a piece of masking tape to prevent the drill from wandering.

AFTERCARE

Do ✓

- Wipe away any water splashes or condensation after use. Excessive exposure to water or sitting water will damage the furniture.
- Clean with a soft damp cloth with a mild detergent only. Surface should then be fully dried using a soft lint free cloth.
- A suitable limescale remover can be used on the **BASIN ONLY** if required but **MUST** be tested on an inconspicuous area of the basin.

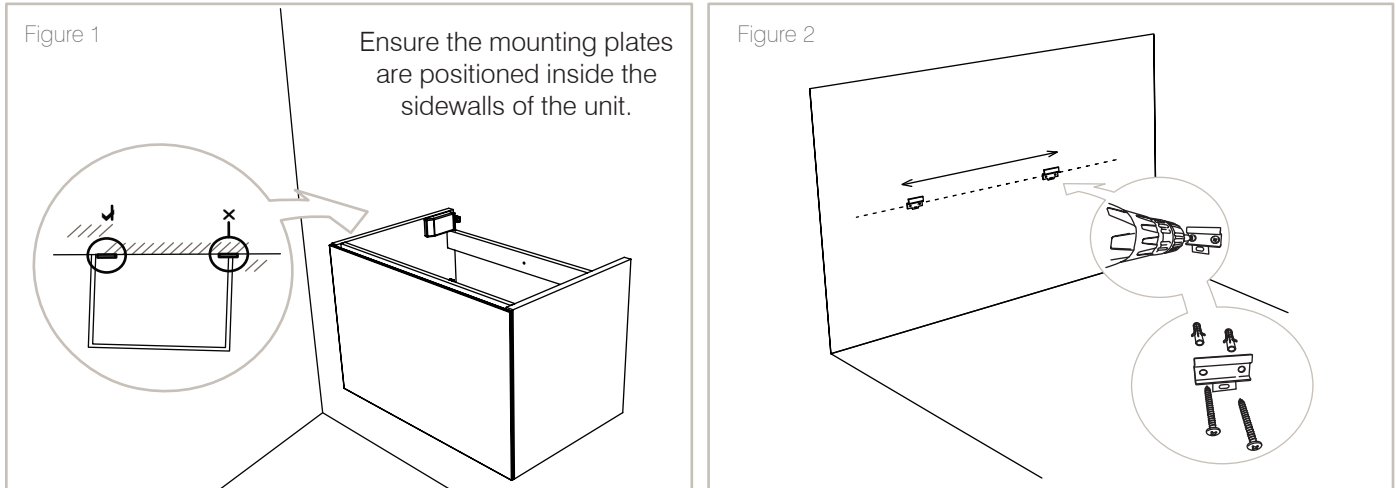
Don't ✗

- Scrub or scour any part of the furniture or basin.
- Use furniture polish.
- Use abrasive or bleaching cleaning agents.
- Allow hot or sharp objects to contact the furniture or basin.

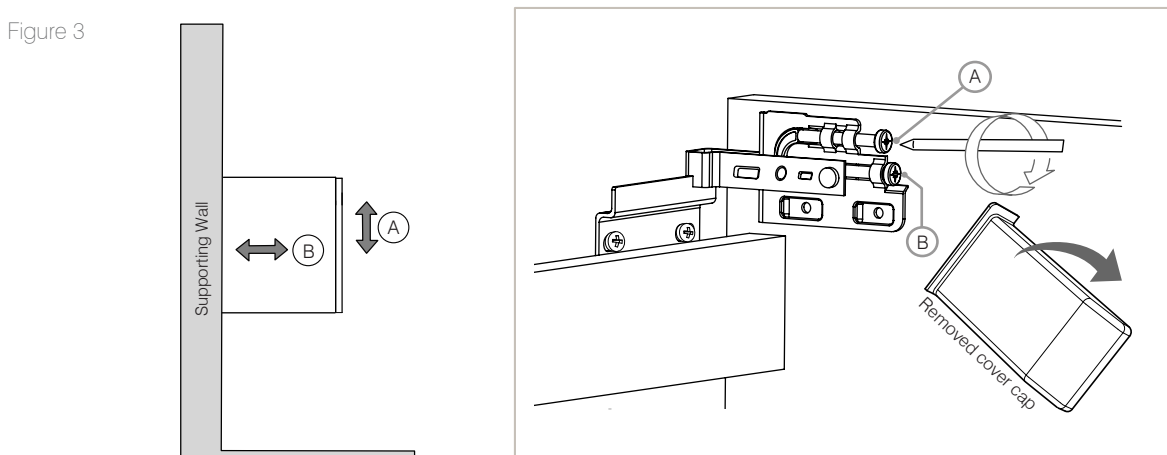
WALL MOUNTING INSTALLATION

For wall hanging units: **WARNING** in order to prevent falling down this product must be used with the wall attachment device provided.

Follow installation and adjustment guide below for wall mounted units:

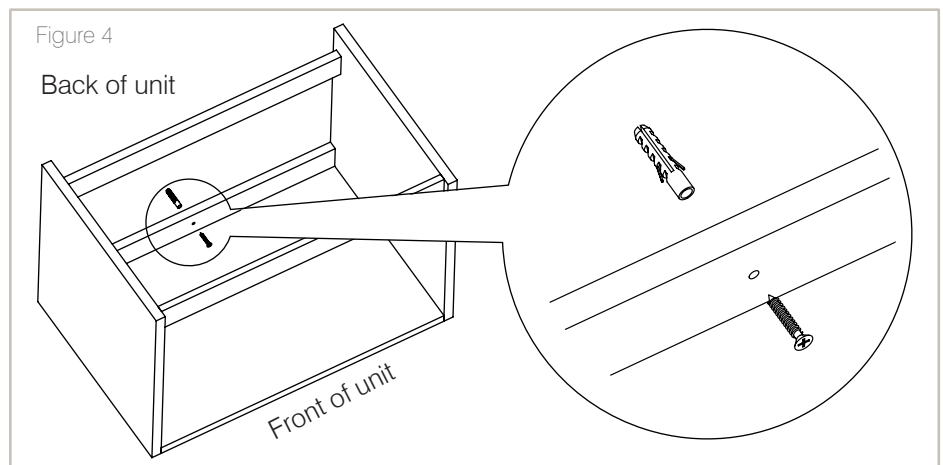


WALL HANGING MECHANISM ADJUSTMENT

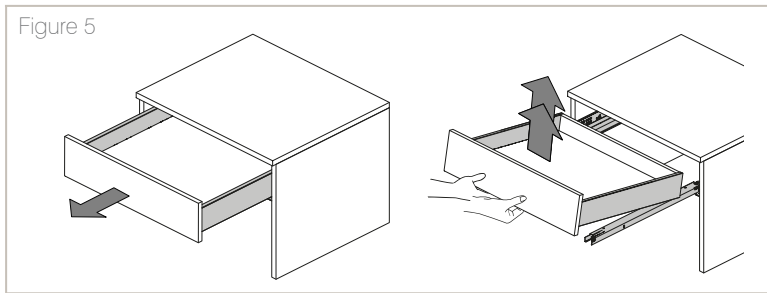


FIXING UNIT TO THE WALL

After hanging the unit on the wall and levelling using a spirit level, further secure the unit to the wall through the bottom brace using suitable fixings .

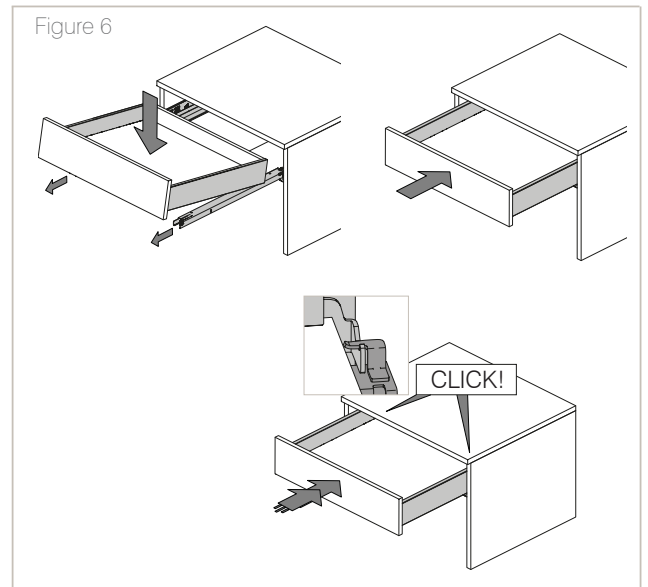


REMOVING DRAWER/ RE-ATTACH DRAWER

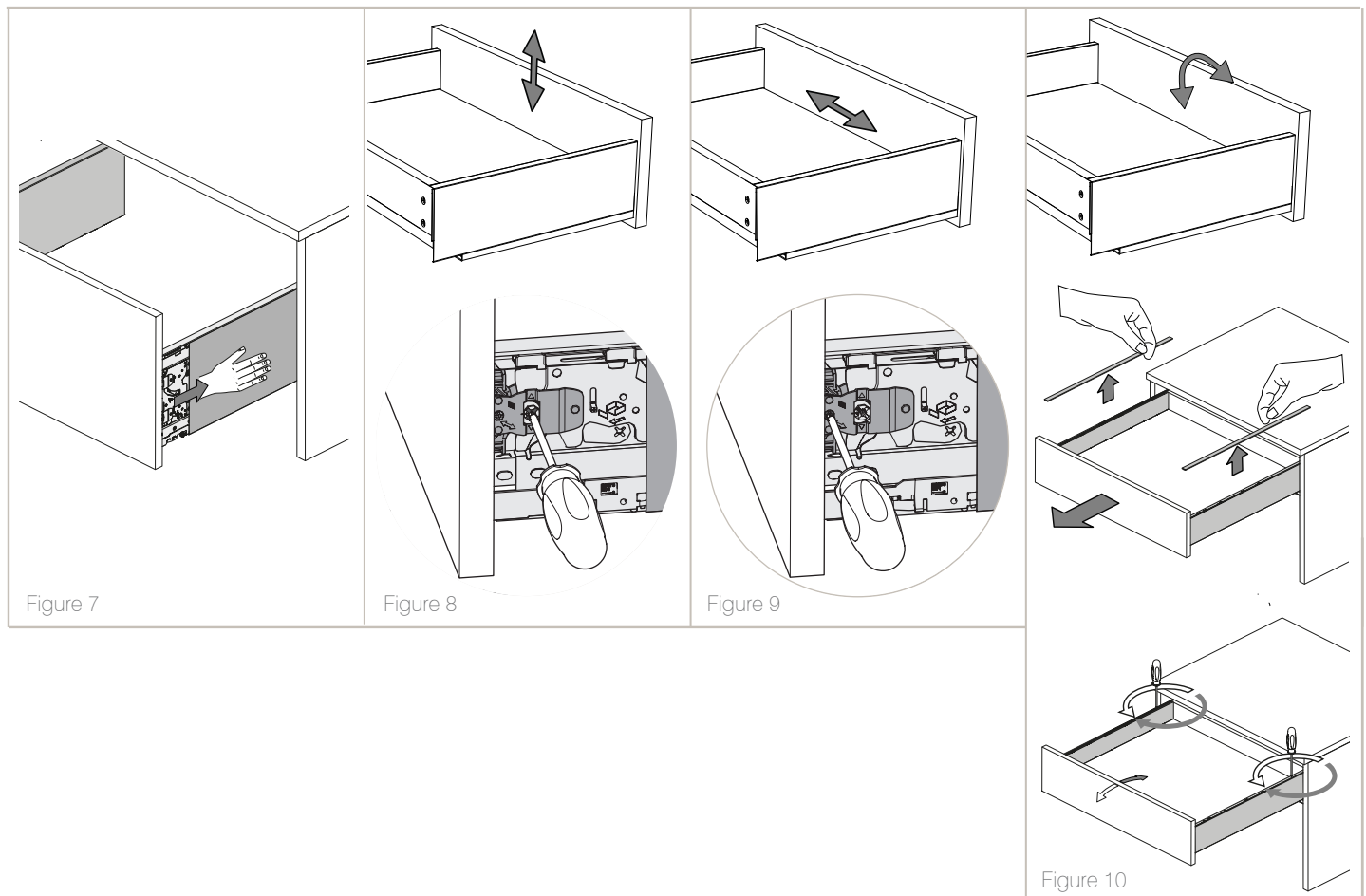


To remove the drawer - pull the drawer fully out and pull up vertically in one sudden, firm motion. Drawer assembly will release from runners from the front. Refer to Figure 5.

When replacing the drawer - ensure that the runners fully engage at the back of the drawer and an audible click is heard. Refer to Figure 6.

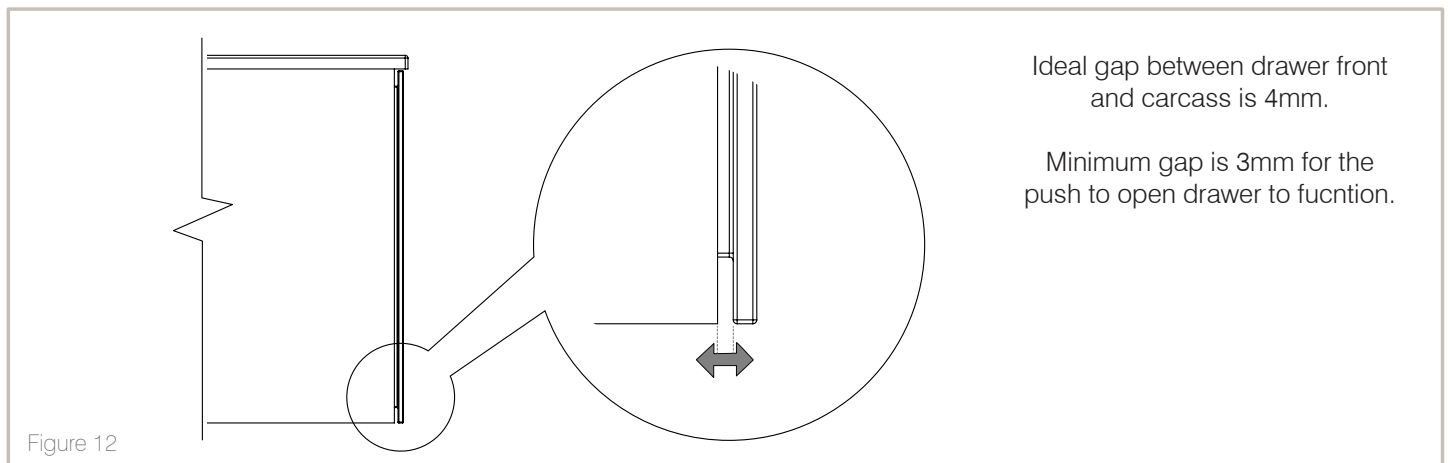
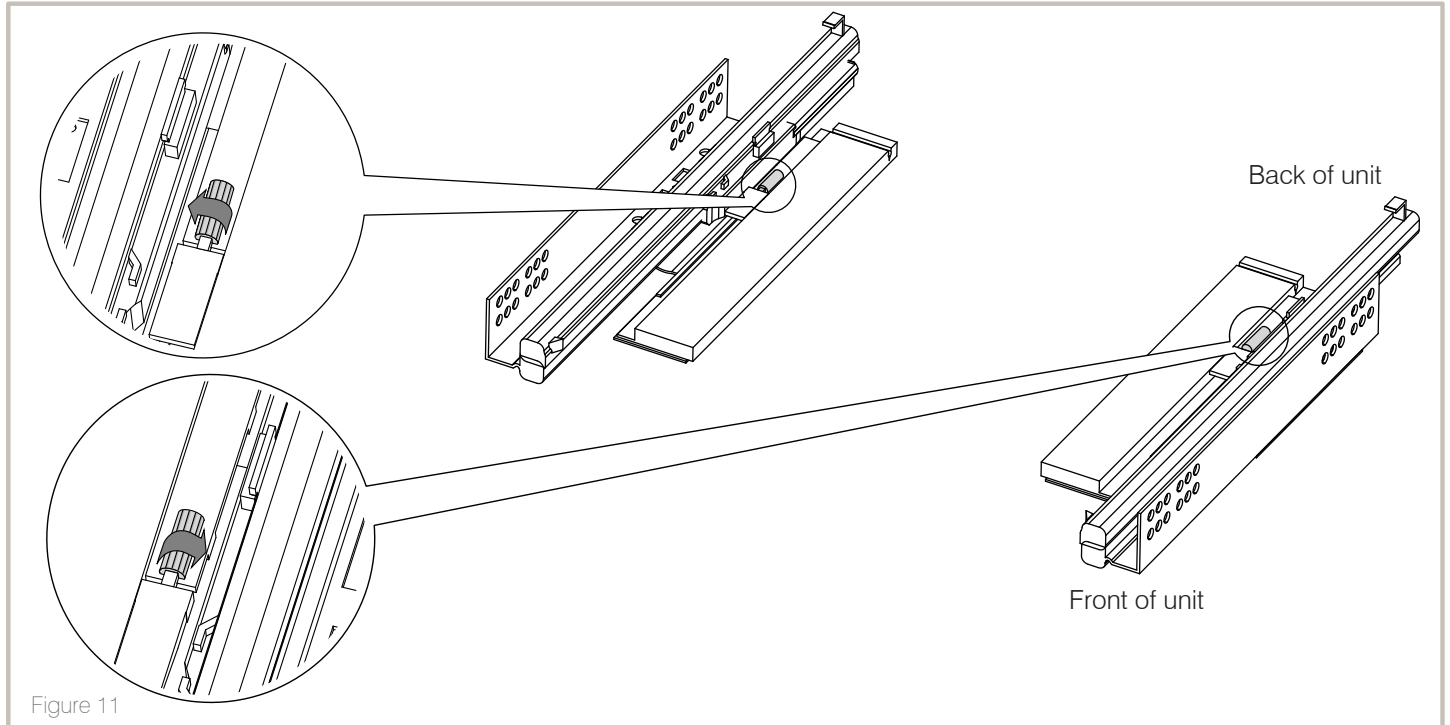


DRAWER ADJUSTMENT

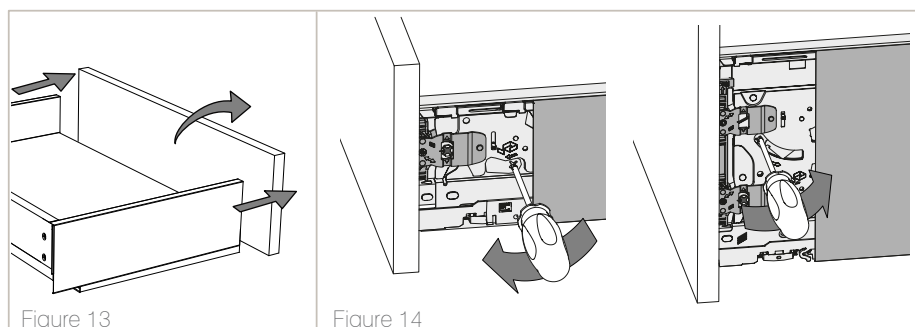


PUSH TO OPEN ADJUSTMENT

Locate the barrels on the drawer runner. Turn the barrels to adjust the distance between the drawer front and the carcass. Increased distance will require a firmer push to open the drawer.



DRAWER FASCIA REMOVAL



BASIN INSTALLATION

Ensure that the push to open drawer is correctly adjusted before plumbing in the basin.

- Apply a bead of silicone to the unit on 2 sides to fix to and protect the side panels as per Figure 15.
- Typically the basin also has a silicone bead along the back edges where it meets the wall (not shown).
- The basin should be held in place while the silicone cures.
- If installing a worktop and vessel basin, please see page 7.

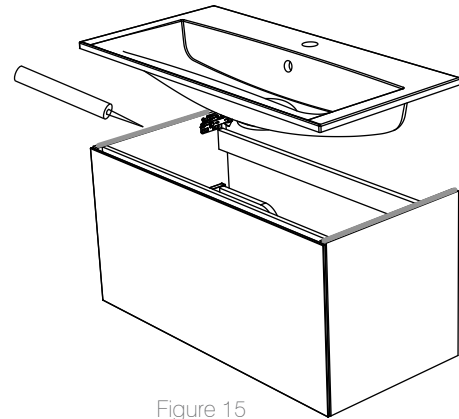
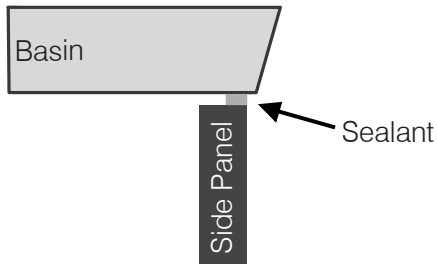


Figure 15

WORKTOP AND VESSEL BASIN INSTALLATION PROCEDURE

If you have chosen a worktop and vessel basin please follow procedure below. If you have not selected a worktop and are using a full width ceramic or isocast basin please see installation procedure on page 1.

IMPORTANT - LENGTH OF THE BRACES

To provide extra support and stability on the worktops they must be used with the worktop kit supplied. This contains 2 aluminium braces with corner brackets.

Ensure each of the braces are cut 10mm shorter before installation into the unit, to ensure a correct fit. See below.

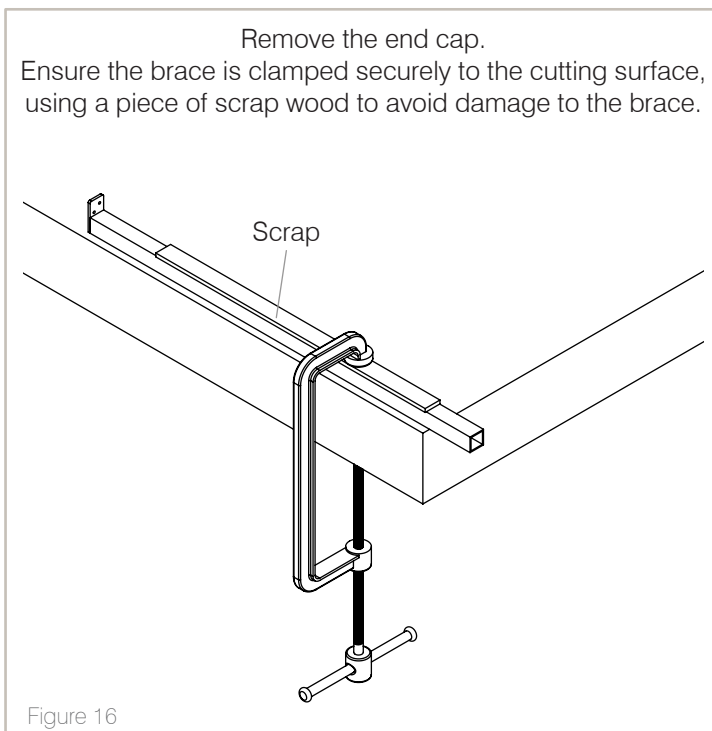


Figure 16

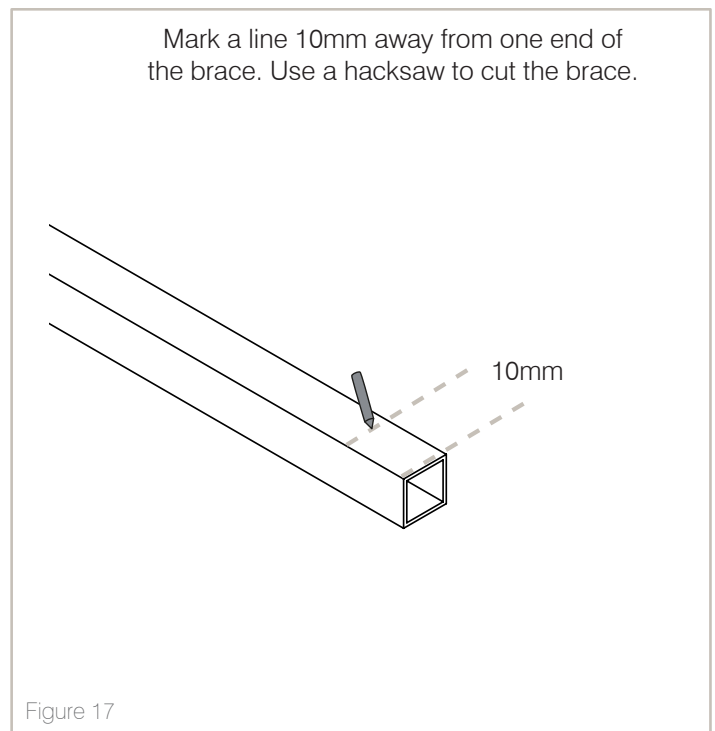
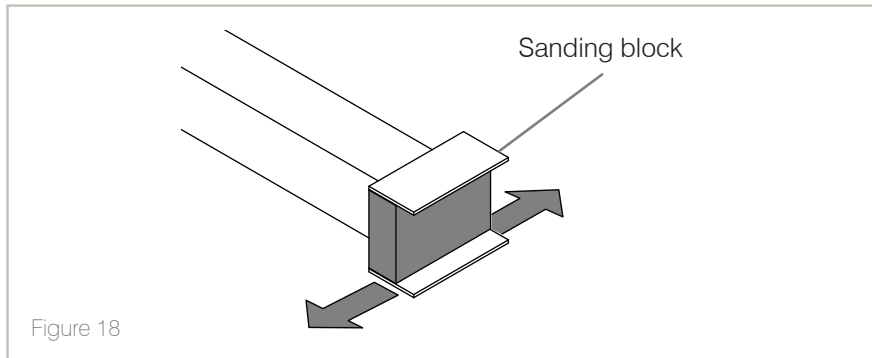


Figure 17

WORKTOP AND VESSEL BASIN INSTALLATION PROCEDURE CONTINUED

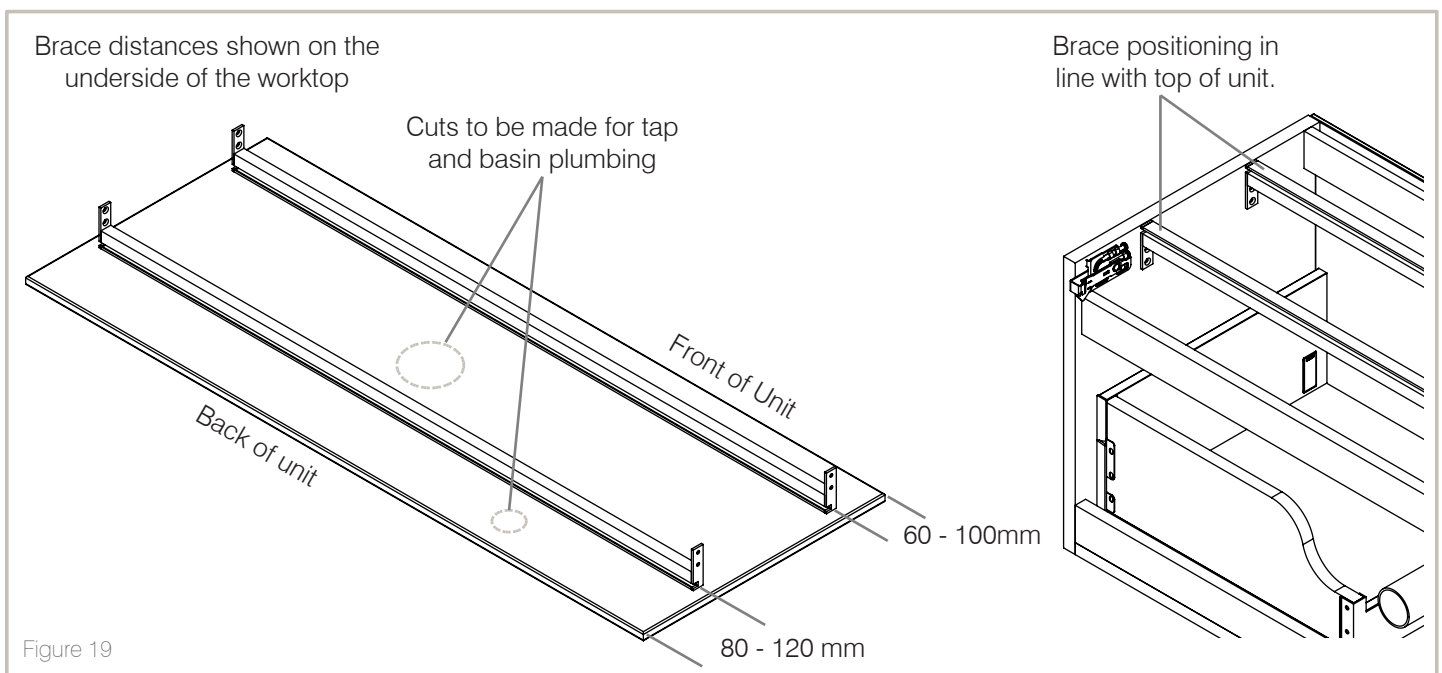
Once the brace is cut, remove all burrs using a sanding block or sand paper as shown below. Replace the end cap. Repeat the cutting process for the second brace.

Upon installation, we recommend that the brace is installed with the exit cut facing the underside of the worksurface.



MOUNTING THE BRACES

Before fixing the braces in place the holes required for basin and tap plumbing should be cut. The braces must be fixed so that they are flush (in line) with the top of the unit to offer full support.



Once the braces have been fixed - the worktop side being fixed to the supports should be fully cleaned using a 50:50 mix of isopropyl alcohol and water cleaner to prepare the bonding area. Allow to dry.

When worktop is dry, remove the film from the back of the tape on the braces and firmly press / clamp worktop in place to force the tape into place along full length of supports. At this stage the worktop should also be fully silicone sealed to the top of the unit around all 4 sides.

The tape takes around 72 hours to fully bond but will be at 90% strength in 1 hour. Firm pressure should be applied during this period to aid this bonding.

Finally, follow the vessel basin instructions to complete the installation.

INSTALLATION OF VESSEL BASIN WITHOUT TAP DECK

The location of the basin should be chosen.

Mark the location of the tap hole and waste hole in the worktop. Remove the basin and cut the holes for the waste and tap plumbing. The hole for the waste should be cut large enough for the entire waste **and** nut to pass through.

Connect the basin, worktop, waste and trap in the order shown in the Figure 20, ensuring the waste is tightly fixed to the basin before positioning the basin on the worktop. We recommend using our low profile trap, TRAP10, which can be found on our website.

The basin should be plumbed in and then sealed to the worktop using silicone sealant (not supplied). A slotted waste should be used for basins with integrated overflows. Other basins should use an open waste.

Finally the worktop should be sealed to the furniture again using silicone sealant.

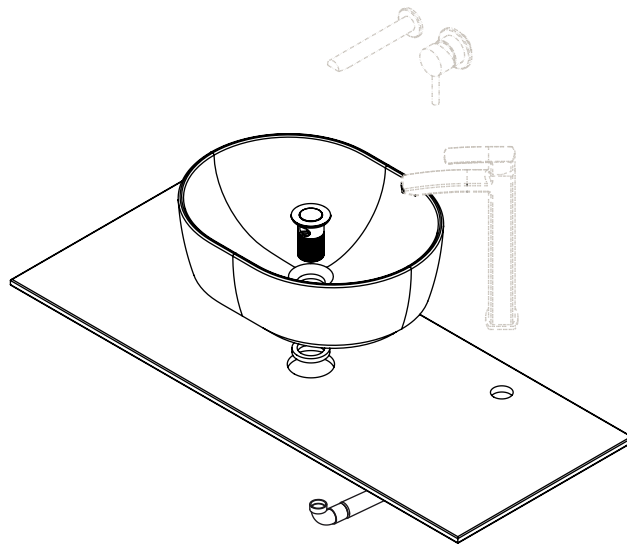


Figure 20